

Gulf Coast Woodturners Association

GCWA Newsletter

Gulf Coast Woodturners Association

February 2000 Issue

President's Corner

The wood is here. Various members of the club got together and ordered enough wood that it had to be shipped on two pallets. The total weight of the pallets was 2730 pounds. That is a lot of wood. Thanks to all who ordered the wood and to Ralph Hecht and Murray Powell for being there to help unload and sort. I also would like to thank Mardena at Exotic Burl for all her efforts in this project, especially labeling the wood with the club members names.

Arbor day went very well at the Houston Arboretum thanks mostly to the efforts of Carl Blair. Carl has the Arbor day event down to a science. By Reed and Larry Thurston brought their lathes and the chips flew. Luna Ford was missed by a few kids, among others, that remembered the tops he made and gave to them. It was a spectacular day to turn and to be outdoors. The sun was shining but it was not too hot; there was a slight breeze but it was not too cool. People were out enjoying the weather as well as all the activities happening at the Arboretum. I was glad I could be a part of the activities.

As most of you realize, I was not at the January meeting of our club. Instead, I was in Temple TX attending the TTT committee meeting. We will have another winning Symposium at the Maricopa Ranch Resort again this year. Mark the weekend on October 7 & 8 on your calendars. In keeping with our rotation of spaces, our space this year will be Tent #2. It is our clubs responsibility to provide a lathe and all the accessories needed for the demonstrators in our area. David Berry brought his lathe and tooling last year for our sponsored tent. This year the raffle prizes will include 4 Jet mini lathes, 2 Stronghold chucks, 2 Talon chucks, and a Wolverine grinding system. The lead demonstrators this year will be two of the following, if they

Coming Events

By Murray Powell

February Program: Mushrooms and Sharpening

When we meet at Deer Park High School (North Campus) on February 19, we really do expect to have **By Reed** demonstrate his semi-hollow form mushrooms that are turned between centers. He was scheduled to demonstrate this in January, but was called out of town at the last minute.

By says these mushrooms may look complex, don't let that fool you. Using almost any size of wood, in almost any grain orientation, By says that you can turn a simple mushroom in a matter of minutes.

We will also have Bill Berry showing us the techniques of sharpening, which is the backbone of turning wood. Bill has some props and procedures which are especially helpful in demonstrating this essential skill.

PS - don't forget to bring a chunk of wood (2"x8" or so) for your mushroom.

**February Meeting
Feb. 19, 2000
Deer Park High School, North
Campus, 402 Ivy Ave., Deer
Park—281-930-4816**

do not have prior commitments:

1. Ray Key
2. Trent Bosch
3. Betty Scarpino
4. Lyle Jamison

Those are the highlights of the meeting. More information will be forthcoming. Watch the bulletin board.

GCWA Web Sites:

[Http://gulfcoastwoodturners.tripod.com](http://gulfcoastwoodturners.tripod.com)

[Http://get.to/gcwa](http://get.to/gcwa)

Inside this issue:

<i>President's Corner</i>	1
<i>Coming Events</i>	1
<i>First Mondays</i>	2
<i>Woodturning Tips</i>	2
<i>Club News</i>	2
<i>February Tool Swap</i>	3
<i>Show & Tell</i>	3
<i>Bring Back</i>	3
<i>Membership</i>	3
<i>Announcements</i>	4
<i>Classified</i>	4
<i>Spring Retreat</i>	4
<i>What is Metal Spinning</i>	5
<i>Advertisements</i>	6
<i>Calendar of Events</i>	7
<i>This Month</i>	7
<i>Program</i>	7
<i>Executive Committee</i>	7
<i>Internet Website URL's</i>	8

GCWA is affiliated with the American Association of Woodturners. GCWA meetings are usually held at 9:00 AM on the 3rd Saturday of each month. Check the Calendar of Events page. Annual dues are \$18. Dues may be mailed to Helen Young, 2502 Esther Ave., Pasadena, TX 77502-3239. Make your check payable to GCWA or Gulf Coast Woodturners Assn.

First Mondays

By Steve Legrue

I began the GCWA First Monday meetings as an informal addition to the monthly meetings. My goal was to provide a hands-on opportunity for novice turners to work with more experienced hands. This goal was initially met with good attendance by turners of all skill levels. With 3 or 4 lathes going, everyone had the chance to make shavings if they wanted to.

In the past few months attendance has dropped to 2-4 people. Has interest in this forum waned, or should we be doing something different?

At this time I plan to cancel First Mondays after February, unless there is a consensus amongst the membership that this is a valuable activity worthy of support.

February Tool Swap

Roger Deatherage has donated tools to our club for the tool swap. These tools will be up for bid at the silent auction. Come with all of your spare Christmas money because there are some great tools to purchase. The following are a few of the tools that will be available:

1. Delta mdl. 23-700 Universal wet/dry grinder.
2. Hitachi 3 hp plunge router.
3. Makita angle grinder.
4. Makita Drill motor.
5. Black & Decker drill motor with a drilling jig.
6. Primus block plane.
7. A Japanese hand plane.
8. A hand brace with a boxed set of bits.
9. Various carving tools.
10. Stanley marking gauge.

If you have any tools you would like to sell or trade, this is the meeting to bring them.

Club News

- ◆ The new GCWA Website is now online at <http://gulfcoast-woodturners.tripod.com> (no hyphen). Check it out and let the webmaster know what you like and don't like. Any suggestions for improvement will be appreciated. The website will always be under a state of change, hopefully for the better. Eventually we hope to be able to change the URL name to exclude the "tripod" segment. The overall plans are to use the website for any and all information of interest or value to the club and its members.
- ◆ We are still looking for worthwhile woodturning tips to publish in the Newsletter. The tips chosen for publication would win 6 free raffle tickets for the next General Meeting raffle.
- ◆ Remember to bring in your surplus and un-needed woodworking tools to the Tool Swap at the February General Meeting. This is an opportunity to turn them into cash or to swap for tools that you do need.
- ◆ The March meeting is scheduled to include a wood swap. So round up your surplus turning wood and plan to bring it in. Maybe you can swap it for that special piece that you have needing for some unique project. There will be more details in the March Newsletter.
- ◆ This issue of the Newsletter is very different in that we have included pictures of the award winning turnings from the last General Meeting. Those of you who receive the Newsletter via Email may encounter lengthy download times because of this. Since this is a first attempt, we would appreciate any feedback as to how much of a problem this really is and whether we should continue with this format. Please send your comments to lmdebose@flash.net.

Woodturning Tips

Kip Powers wins the free raffle tickets this month for this Tip.

Sanding Technique

By Kip Powers

This trick is not original with me. I picked it up from the Usenet rec.crafts.woodturning newsgroup.

When you run into an area on a piece that seems to resist sanding smooth, rub in some paste wax on the recalcitrant area and sand again. I didn't believe this when I first read it, but so far it has been a big help in situations when I have tried it. I've used Johnson's wax, cheapest I've found, and after application continued with whatever sanding procedure I'd been using: i.e. if you are power sanding with 100 grit and have an area that does not respond as you'd like, apply the wax and re-sand with the same grit.

Results, with sound wood that had areas of tear out or weird grain, have so far been quite good. My guess would be that this trick would not be successful on "punky" spots but I haven't had the chance to try it.

So far, I have not seen any problems with the wax discoloring the wood or had any interference with finishing. My usual finishing procedure involves a lacquer sanding sealer followed by a varnish oil mixture. Wet sanding with MinWax 209 probably would not be effected either, but there might be problems with water based coatings.

Show & Tell

Winners at the January meeting at Pro-Tool and Supply were:

Beginning Category:

1st Place — **Bart Rhoads** for a Segmented Bowl.



2nd Place — **Bart Rhoads** for a Dark Vase.

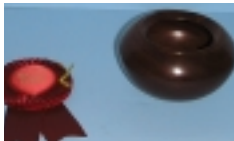
Advanced Category:

One Piece Turning:

1st Place — **Andy Chen** for Oval Dishes.



2nd Place — **Chuck Garrett** for a Red Bowl.



3rd Place — **Bill Hubbard** for a Platter.



Multiple Piece Turning:

1st Place — **Andy Chen** for a Closed Vessel w/Open Segments.



2nd Place — **Murray Powell** for a Candy Dish.



3rd Place — **Kip Powers** for a Pedestal Table.

Intermediate Category:

1st Place — **Jeff Schrader** for a Cream Dish.



2nd Place — **Don Fluker** for a Natural Edge Bowl.



Special Award

Jim Keller for a Freeform Block.



Best of Show Award

Gary Rodgers for a Closed Bowl with Flower Carvings.



Special thanks to our Judges, **Vic Vucinovich** and **Mickey Johnson**.

Be sure and check out the photos of many of the other woodturnings entered in the monthly contests on the GCWA Web Sites. See the front or back pages for the URL addresses.

Bring Back

Bring Back Items Raffle Winners:

Bill Hubbard, Kip Powers, Don Fluker, and Doug Hollingsworth.

Membership

Please welcome our new members;

Barbara Huddleston, James Box, Barley Rhoads, Richard Gaede and Charles Webb

This will be your last newsletter if your membership dues expired January 31, 1999.

Announcements

☞ The February GCWA meeting will host a Tool Swap for members and guests. **Please limit to woodworking or wood-turning tools only.**

☞ The March GCWA meeting will host a Wood Swap for members and guests.

☞ A suggestion was made by Jim Keller at the January General Meeting to conduct a Workmanship Critique at the February Meeting. This will consist of the following process:

- Each member wishing to participate should bring a turned work piece to the meeting to enter into the critique.
- Each entered work piece will then be presented to the membership for critical review and comments.
- Such factors as design, workmanship, execution, and artistic value will be considered.
- The objective will be to obtain opinions from other members based upon their experience and knowledge with the end goal of providing helpful advice and analysis to the participants.

☞ The burl wood ordered by some of the members came from Exotic Burl. Visit their website at www.exoticburl.com.

☞ The election of Club Officers for the next term will be held in May. The positions to be filled are: Secretary, Treasurer and one Board Member. The Nominating Committee will begin its selection procedure this month. The Nominating Committee Members will be appointed by the Board and announced at the February General Meeting.

GCWA Spring 2000 Retreat

By Boyce Gahagan

The Spring 200 Retreat is scheduled for **May 20 – 21** at the Montgomery County Fairgrounds in Conroe. The main focus of the Retreat will be a hands-on turning experience.

We have a few people who have volunteered already.

- **Bill Hubbard** will bring his lathe, accessories and wood for door prizes. He will also be an instructor. Thanks Bill.
- **Willie Hopper** will be in charge of getting lathes and equipment. See Willie at the February meeting if you can bring your lathe. Mini lathes will do. For whatever piece of equipment you bring, please bring **ALL** accessories. Thanks Willie for your help.
- **Vic Vucinovich** will be in charge of giving away the raffle items at the Retreat. Thanks Vic.
- **Joan Luedke** will be in charge of selling the raffle tickets. Thanks Joan.
- **Helen Young** will take care of registration and name tags. Thanks Helen.
- We are fortunate to have **Linda Box** for Hospitality. Most of you can remember breakfast with all of the good things she did the last three years. Thanks Linda.
- **Don Philpott** will bring his **whole shop** again and have all the fun

things to do in turning. Thanks Don.

- **Steve Russell** is working on setting up a suggested schedule for instructors and he will be an instructor as well. Give Steve a hand at the February meeting. Thanks Steve.

There are other volunteers I have not contacted yet, **Andy Chen, Bob Bullock, Dale Barrack, Michael Dolloff** and **Bobby Miller**.

The Retreat will be conducted for club members to enjoy and learn from the hands on experience. Lunch will be provided by **Kountry Katfish**. Coffee and other refreshments throughout the day will be part of our own volunteer service.

The cost for club members is **\$35.00, \$20.00 for family members**. See Helen at the February and March meetings for a special prize registration. In February and March you will receive 5 raffle tickets with paid registration. Keep your calendar open for May 20 – 21. Don't miss this great learning experience.

Thanks again to those who have volunteered. We will have a short session at the February meeting to recruit more volunteers for various positions needed. See you at the meeting.

Classified

For Sale

Delta Model 46-200 12" x 36" wood lathe; 4 Speed, 915, 1380, 2160, 3260, new 3/4 Hp motor 120/230 single phase, 6" and 12" tool rest, new live center; \$650.00. Also NOVA Chuck; \$125. Brian Laing - (281) 580-5381 & Cell. (281) 682-4413

Wood Lathe and Jointer. The Wood Lathe is a large one from Crescent Machine Company and the jointer is a Davis and Wells. Both are oldies but goodies. You just can't find them like this from the manufactures to-

day. They can be viewed on the Internet at <http://home.houston.rr.com/tallsports> or you may call me, Kelly Strader, at (713) 853-0500.

(Editor's Note; This article was borrowed from Fred Holder's Website at www.fholder.com/woodturning/.)

What is Metal Spinning

by Fred Holder

[This article was published in the January 1997 issue of More Woodturning as a part of the issue theme of Metal Spinning. Other articles on this subject were included in that issue.]

Metal spinning is the process by which a piece of flat sheet metal is formed over a pre-turned, three-dimensional pattern while it is spinning on a lathe. This forming is done by applying pressure to the metal as it spins to press it against the wooden form and cause the metal to take on the form of the pattern.

The male (wood form) pattern must be turned from a good hard dense wood such as maple or a material of equal hardness. Normally, such spinning is for open forms; i.e., the opening is larger diameter than the rest of the form, thus allowing the spun metal to be easily removed from the pattern. When closed forms are required, it is normal to form the object as several pieces and then solder them together to form the final closed form. However, it is possible to fabricate the male patterns such that they can be disassembled after the spinning is completed; thus, removing the pattern from the spun work through disassembly.

Normal metals suitable for spinning include copper, brass, bronze, pewter, aluminum, silver and mild steel in gauges from 22 (.025") to 14 (.064"). It is important that the metals be annealed prior to beginning the spinning process. If the process is too severe, it may even be necessary to anneal the metal a second or third time before the spinning can be completed. Metal that is too hard to begin with may readily crack rather than form to the mold.

To begin the spinning, the metal disk is centered between the male pattern (mounted on the headstock) and a wood follower mounted on the tailstock (a live center is desirable). Clamping pressure to hold the metal in position is applied by cranking the tailstock tightly against it. This pressure is the only thing holding the metal in place when you first begin, so be careful, that spinning disk would be like a knife if it came loose from the lathe. However, if you center the disk carefully and don't run the lathe too fast, there should be very little danger.

The outside of the metal disk (tailstock side) must be lubricated to prevent galling. Tallow, beeswax, grease or soap will all work. Bill Moore gave a formula recommended by Dave Hout that consists of:

- 3 parts beeswax
- 1 part paraffin
- 1 part toilet bowl seal wax.

I presume you melt these all together, stir them thoroughly and then allow to cool before using. Once your metal is spinning, you apply pressure to the metal with a blunt, smooth tool that has no sharp edges. I've read that a hardwood tool can be used for this purpose, but I suspect that a polished steel rod with a blunt, rounded end such as Bill Moore uses would be most suitable. When Jim Hume needed tools for his tail light can project (described briefly in our lead story),

he visited a local blacksmith/toolmaker (Savage Forge in Clearlake, Washington) to have his tools special made for the task. This would likely be a good move unless you are a blacksmith or toolmaker yourself.

You do need a special tool rest with holes in it to take a pin that can be used as a fulcrum when levering the tool against the form to shape the metal. It would be best if the tool rest has several holes so that the fulcrum pin could be moved as the work progresses toward the outside or top of the formed vessel (assuming it is a vessel).

Bill Moore states that the stroking should be from the smaller diameter (the foot or the tailstock point) toward the larger diameter (the headstock side). The point of contact of the forming tool with the spinning metal should be below center line and the stroke should be from the center to the outside edge. The repetition of the pressure draws the metal down over the male form, causing it to take the shape of the pattern against which it is being spun.

If you're making a piece of art or production pieces, the process is the same. The pattern can be used again and again if one takes care of it and exerts reasonable care in the spinning process. It's amazing how quickly a piece can be formed, trimmed to size, and polished-ready to use in a short time.

Request for Articles

Do you have some special interests related to woodturning or some unique knowledge of woodturning practices, tooling, machines, woods, finishes, or other subjects that others would be interested in? Can you impartially critique a shop machine, tooling, finishes, etc.? We need articles on these subjects written by you or with your assistance to fill our monthly newsletter. Let us hear from you. See the back page of the Newsletter for contact information.

Support Our Advertisers

The Finest Hand Tools The World Has To Offer

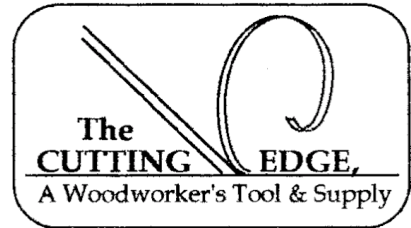
Turning Tools By Henry Taylor, Robert Sorby and Jerry Glaser
Hollowing Tools by Lyle Jamieson, Dennis Stewart, Robt. Sorby,
Kel McNaughton, H. Taylor and others.

Chucks, Wolverine Grinding Systems, Spur Drives, and Live
Centers By OneWay Mfg.

Lathes by OneWay, JET and Sherline

Full line of Accessories, Books, Videos, Project Supplies
Wood Burning and Wood Carving Tools

7123 Southwest Frwy, Just North of Bellaire Blvd. 713/981-9228



Mon.-Fri. 9 am to 6 pm
Sat. 10 am to 5pm
Sun. Noon to 4 pm

Boyce Gahagan Pen Supplies Best Prices Every Day

PEN CLASSES Call For Scheduling. Wood Pen blanks, Zebrawood, Bubinga,
Rosewood, Myrtle, Buris, Stabilized wood blanks. Acrylic Pen Blanks.

YO YO's • American Flat Top Style Pens and Pencils • Screw Cap Rollerball
Pens • Cross Style pens and pencils • Euro Style Pens and Pencils with Flat Top
Refills • Screw Cap Fountain Pens • Perfume Pens • Key Rings • Letter Openers
Magnifying Glass • Laser Pointer Key Ring • Mandrels • Bushings • Drill Bits • HUT PPP
Cyanoacrylate Glue • Band Saw Blades and other related items.

20201 Fox Glen, Humble, TX 77338 • 281 446 1590 (also Fax)

Looking for great quality Power & Hand Tools?

DELTA

DEWALT

JET

Pasadena Industrial Supply



PORTER+CABLE
PROFESSIONAL POWER TOOLS

STANLEY BOSTITCH

BOSCH

222 W. 225 Frwy
Pasadena, Texas 77506
(713) 472-5588 Fax (713) 472-0915

eMail pro_tool@swbell.net

6524 South Congress
Austin, Texas 78745
(512) 707-7077 Fax (512) 707-7155



Custom Laser Engraving

Pens & Pencils \$2.50 each, one line only Other Items Quoted on Request

Larry Seale
Robin Seale

(281) 350-3005

3503 El James
Spring, TX 77388

Calendar of Events

Scheduled Meetings & Events

February 14, 2000 ~ Board Meeting ~ 7:00 PM ~ Thomas Irven home, 5202 Willow St., Bellaire, 713-666-6881

February 19, 2000 ~ GCWA Meeting ~ 9:00 AM ~ Deer Park High School, North Campus, 402 Ivy Ave., Deer Park, 281-930-4816

March 6, 2000 ~ First Monday ~ **CANCELED**

March 13, 2000 ~ Board Meeting ~ 7:00 PM ~ Thomas Irven home, 5202 Willow St., Bellaire, 713-666-6881

March 18, 2000 ~ GCWA Meeting ~ 9:00 AM ~ The Cutting Edge Woodworker's and Tool Supply, 7123 Southwest Fwy., 713-981-9228

April 3, 2000 ~ First Monday ~ 7:00 PM ~ The Cutting Edge Woodworker's and Tool Supply, 7123 Southwest Fwy., 713-981-9228

April 10, 2000 ~ Board Meeting ~ 7:00 PM ~ Thomas Irven home, 5202 Willow St., Bellaire, 713-666-6881

April 14-16, 2000 ~ National Woodworking Tool Show ~ Astro Arena

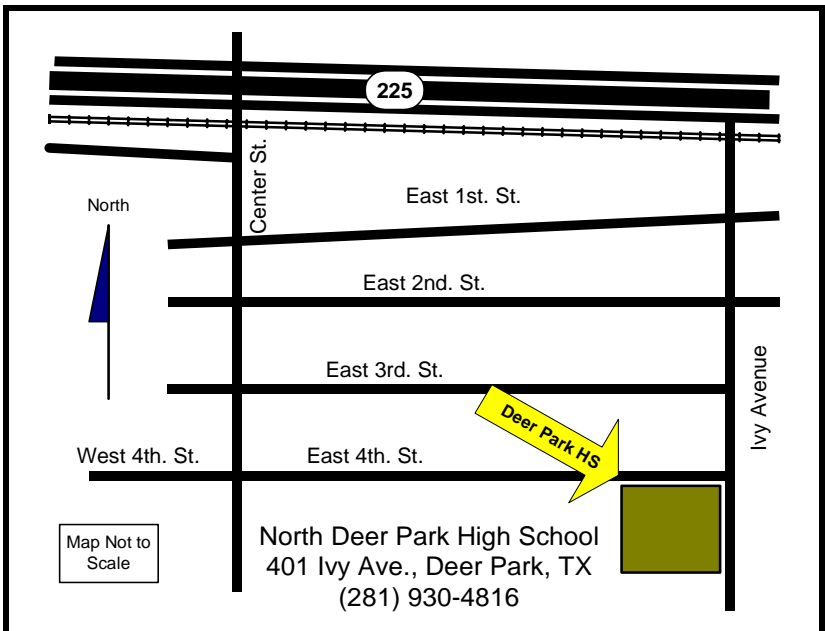
April 15, 2000 ~ GCWA Meeting ~ 9:00 AM ~ Deer Park High School, North Campus, 402 Ivy Ave., Deer Park, 281-930-4816

May 1, 2000 ~ First Monday ~ 7:00 PM ~ The Cutting Edge Woodworker's and Tool Supply, 7123 Southwest Fwy., 713-981-9228

May 8, 2000 ~ Board Meeting ~ 7:00 PM ~ Thomas Irven home, 5202 Willow St., Bellaire, 713-666-6881

May 20 & 21, 2000 ~ GCWA Turning Retreat ~ 9:00 AM ~ Montgomery County Fairgrounds, Conroe, TX

June 12, 2000 ~ Board Meeting ~ 7:00 PM ~ Thomas Irven home, 5202 Willow St., Bellaire, 713-666-6881



This Month

February 19 - 9:00 AM ~ GCWA Meeting at North Deer Park High School, 402 Ivy Avenue, Deer Park, TX (281)930-4816

Program

Pre Meeting ~ Ralph Hecht — Operating a lathe for hands on help for anybody interested.

Main Program ~ By Reed — "Mushrooms and More", How to make semi-hollow forms between centers.

Executive Committee

President	Thomas Irven	713-666-6881	kirven@tenet.edu
Vice President	Murray Powell	713-682-2810	mpowell@wantabe.com
Secretary	Carl Blair	713-946-6344	Cblair@orbitworld.net
Treasurer	Helen Young	713-475-2940	helen@orbitworld.net
Past President	Bobby Bridges	713-473-6491	wwbob@AOL.com
Board Member	Boyce Gahagan	281-446-1590	
Board Member	Chuck Garrett	281-980-3367	
Editor/Webmaster	Mack DeBose	281-537-1814	lmdebose@flash.net
Librarian	Ernie Bahr	713-534-0559	

Gulf Coast Woodturners Association
Newsletter Editor
Phone: 281-537-1814
Fax: 281-537-1814
Email: lmdebose@flash.net

Program Chairman
Murray Powell
Phone: 713-682-2810
Email: mpowell@wantabe.com

Internet Web Sites of Interest

American Association of Woodturners: <http://rtpnet.org/~aaw>
Robert Sorby: <http://www.robert-sorby.co.uk/turning.htm>
Woodturning Supply Sources: <http://www.rtpnet.org/~twnc/sources.html>
Wood Magazine: <http://www.woodmagazine.com>
The Cutting Edge: <http://www.cuttingedgetools.com>
Woodcraft: <http://www.woodcraft.com>
Triangle Woodturners of North Carolina: <http://www.rtpnet.org/~twnc/>
Tidewater Turners of Virginia: <http://www.exva.net/~woodturner/>
North Carolina Woodturners Association: <http://www.charweb.org/ncwa/>
Fred Holder's More Woodturning: <http://www.fholder.com/woodturning/>
Exotic Burl: <http://www.exoticburl.com/>

GCWA Web Sites:

[Http://gulfcoastwoodturners.tripod.com](http://gulfcoastwoodturners.tripod.com)
[Http://get.to/gcwa](http://get.to/gcwa)



Gulf Coast Woodturners
Association