



Gulf Coast Woodturners Association

GCWA Newsletter

Gulf Coast Woodturners Association



November 2004

President's Corner

GCWA Web Sites:

[Http://www.gulfcoast-woodturners.org](http://www.gulfcoast-woodturners.org)

[Http://go.to/gcwa](http://go.to/gcwa)

A great big "Thank you" to everyone who brought a box for the Great Box Exchange. We had 54 boxes involved and they were absolutely fantastic. I hope all of you who participated learned some valuable lessons in wood turning and artistry from the experience. Even better, I know that all who participated are especially grateful for the opportunity to be able to collect the turnings of others.

GCWA also thanks David Berry for hosting us at his Deer Park High School wood shop. It was a perfect venue for our program. Several of our club mentors conducted mini-sessions, giving turning tips and hands-on opportunities to the members.

Our November meeting at Armond Bayou Nature Center will feature a presentation of jigs and fixtures. We invite all members who use hand-made or purchased apparatus to bring them to the meeting. We'll set up a special table to display the items and spend part of our meeting time discussing their design and uses.

Also at our November meeting, Randall Hassig will be taking pictures of our members who were not present at our September meeting. We are trying to get photographs of all our members to use in the newsletter or on our website when our members win honors and so forth.

If you have wished that you could take studio-quality photographs of your turnings but you don't have the facility, bring your best pieces to the November meeting. Dale Barrack, our new web site artistic director, will take photographs of the pieces for possible use on the website. Dale and Ernie Bahr, technical director, have been working to put together some outstanding new features including articles about members, photographs of members in their workshops, and photographs of member's turnings.

It's not too early to begin thinking about our December meeting and the Christmas ornament exchange. Like the box swap, the more ornaments you bring, the more you get to collect from other turners.

Okay, so October was not as cool as we had hoped. The 90+ temperatures may have kept you in the house rather than in the workshop, but surely November will bring a break in the heat and you really won't have any excuses. Get out there and make some shavings!

Janice Levi

November Meeting, Nov. 20, 2004
Armond Bayou Nature Park
8500 Bay Area Blvd.
Pasadena, TX

Call For Volunteers

By: Rick Barnes

I am looking for some help with a project I am putting together for my Boy Scout Troop. We are looking for some adults who are available to help with the teaching of some merit badge classes.

Since most of you, I'm sure, are not Merit Badge counselors, maybe someone would like to help with the Woodcarving or Woodworking Merit Badges. These are the only ones that involve woodworking of any kind. There is a turning requirement option for Woodworking.

We would set up some lathes in the gym of the church we will be teaching the classes in. The idea behind this effort is to give the boys some meaningful activities to do during the Christmas break.

The event, called "Merit Badge Blitz" will be held on December 28th, 29th, & 30th of this year. The location will be at the Church of Jesus Christ of Latter Day Saints building, 505 Deseret in Friendswood. This is close to where the club's picnic was held this past April.

We will need some more lathes, so if anyone is interested in spending any part of this 3 day period helping teach some Boy Scouts about woodturning, please contact Rick Barnes. Cell phone # 713-817-5467. I will have more information at the next club meeting and in next month's newsletter.

Show & Tell

Winners at the October meeting held at Deer Park High School were:

Beginner Category

- 1st Place — **Don Dean** for a Lemonwood Bowl
2nd Place — **Janet Landes** for a River Birch Weed Pot
3rd Place — **Janet Landes** for a Eucalyptus Candle Holder

Intermediate Category

- 1st Place — **None**
2nd Place — **None**
3rd Place — **None**

Advanced Category

- 1st Place — **Bob Brown** for a Cocobolo Vase
2nd Place — **Marty Kaminsky** for an Elm Bowl w/ a Purple Heart Rim
3rd Place — **George Greider** for a Natural Edge Mesquite Bowl

Segmented

- 1st Place — **Jerry Bennett** for a Space Ship Box
2nd Place — **David Berry** for an Open Segmented Vase
3rd Place — **Jerry Bennett** for a Bent Bubinga Vessel

Enhanced

- 1st Place — **Gene Bradley** for a Cherry Bowl with Carved Lid & Open Hearts
2nd Place — **Bill Hubbard** for a Carved Flower Box of Pecan and Australian Grass Wood
3rd Place — **Jeff Schrader** for a Curley Ash Platter w/ Black Dye and Carved Rim

Special Award

Andy Chen for a large segmented Southwest Style Vessel w/ Thunderbirds

Special thanks to our Judges;
Diana Gahagan and
Randall Hassig

Pictures of these turnings can be viewed at www.gulfcoastwoodturners.org and go.to/gcwa

Club News & Announcements

Turning Aids Show

Don't forget to bring some of your homemade tools, jigs, fixtures, gauges, steady rests, machine accessories, etc. to show and tell about their uses and origination. Almost anything related to wood turning is acceptable. If you have found a commercial tool or device that you think others would like to be aware of, by all means, bring it too. You are not limited to hardware either. Computer software, special procedures and processes are also considered "turning aids".

Juried Shows

In January we will be having a meeting you might call, "An Introduction to Juried Shows". In the interest of having exposure to such an event, the board has decided to give it's members a taste of what it might be like to be in a juried event. We will make this as simple as possible. With the categories we usually have, all you have to do to enter the event is put your piece on the table as usual for Show and Tell. We will have a regular set of judges along with some staff from HCCC to do the judging. We will be awarding Certificates of Merit for the entries that meet with the jury criteria. These members will have the opportunity to have their piece exhibited in the gallery for 30 days.

Arrowmont Totem Pole

Greg Gonsalves is collecting turned spindles for the Totem Pole Project at Arrowmont Scholl of Arts and Crafts in Gatlinburg, Tennessee. If you haven't heard about this, look in the Summer 2004 issue of the AAW's "American Woodturner" magazine. GCWA will be submitting a section for the new Totem Pole that will be erected on the school campus. If you would like to participate, let Greg know now. The project should be completed very soon.

Woodturning Tips

By: Tom Enloe

This month, Janice has contributed several tips for the newsletter. I think I remember these from the "Show and Tell" discussion of different meetings so we know she has been paying attention. Very good tips collected from good turners - thank you Janice.

Wayne Stanfield—To darken purple heart, paint muriatic acid onto the finished turning and place the turning in the sun or leave it overnight to dry. Lightly sand the piece when dry.

Jerry Bennett—To clean glue or finish from the spaces between segments, use a pipe cleaner. Use spray lacquer, while the lathe is turning, on the inside of the segmented piece to get into the spaces.

Jeff Schraeder—When using black dye, leather dye is very black but migrates through the wood pores. India ink is not as dark, but does not migrate as much. When dying only one area of the turning, apply finish or sealer to the surrounding area so the dye won't bleed so badly.

Andy Chen—When gluing up segments, use Titebond III, the new waterproof glue. The glue line is not supposed to creep and show up over time as it does with regular Titebond or Titebond II.

Membership

We had three new members to join GCWA in October.

Welcome to:

Frank Campbell
Patrick Keefer
Paula Haymond

From the Box Makers

By: Bill Berry

During the October meeting GCWA conducted its first "BOX SWAP". A total of 54 boxes were turned and exchanged. An email was sent to the membership asking for those who turned boxes to share some of their experiences with me, and I would compile them and do an article for the newsletter. The following is a compilation of their comments and suggestions. I have divided the process into four parts: **Wood, Design, Turning Techniques, and Finish**. I want to thank those who contributed and shared their experiences.

Wood:

Dark woods "look" better than light woods. . If you use light wood accent it with a dark wood. -*Bill Berry*.

I love working with tight grained wood: Mesquite, Bois d'arc, Boxwood, even Paduak - *Diana Gahagan*.

I always turn end grain on small boxes, including finials and inlay. I like to use local and available woods- Mesquite and Ash, both seem to be stable. I also use most of the Rosewood family, Ebony, Blackwood, Kingwood, Cocobolo, Tulipwood, Pink Ivory, and Bloodwood. I have turned some burls with mixed results, especially trouble in fitting lids and wood movement- Mesquite is okay. Don't be surprised if box lids are tight after a period of time if you have made a box with suction fit. You can make them fit too good. Highly figured woods need less decoration, but I have used chatterwork (wood must be hard and dense for good chatterwork). - *Bob Brown*.

Very dry wood is best - but I rough turned wet Mesquite to hollow cylinders on Monday and could fit and finish a stable box by Friday. . The wood never once uttered a word to me. - *Kevin Turco*.

Although the box I made for the swap does not have a tight fitting lid there are a few important points to make. First, allow for the lid to be fairly thick. Minimum thickness depends on the type of wood. For stable woods - Mesquite can be thinner. It is important for a close fitting lid to be round and that means the wood must retain its shape after turning. Some woods may have to have to be rough turned and allowed to "stress" relieve before final turning. Pecan is the best example I can think of this characteristic. - *Brian Laing*.

I used elm for most of the boxes and found it very attractive. - *Marty Kaminsky*.

Design:

I always like boxes with a little surprise inside. Like a design on the underside of the lid. - *Randall Hassig*.

I generally decorate plain wood with some kind of inlay, or finial. Richard Raffan's Book on [Box Making](#) is good., Chris Stott's- [Turned Boxes - 50 Designs](#) is also good. - *Bob Brown*.

I decided to turn an unusual box that would be immediately recognizable as something I turned. A segmented box would be a signature enough, but an elliptical shape

would be just unmistakable. I liked the "thunderbird" design on my latest segmented vessel. So, I decided to use that pattern. As it turned out, it was somewhat easier to turn a segmented elliptical vessel than a solid one because the cutting is much reduced. Careful planning is essential. - *Andy Chen*.

If I don't make a conscious effort to design - I end up with a slightly rounded barrel. Large beads don't look nice, especially around the lid rim. Very subdued low profile beads and flats look best. - *Kevin Turco*.

Making boxes gives me an opportunity to try new things with a smaller commitment of time and wood than with a full size vessel. A box allows you to try odd combinations of wood and textures. A good example was Kendall Westbrook's lid top made entirely of coffee grounds, or Bill Hubbard's carved box, or Bill Tilson's superb marquetry boxes. How about Bill Berry's "Bullet" box? I used to make pens for the same purpose, to try new things, now I use boxes. I have been thinking about a box with four lids, or one consisting of only lids, or one with only bottoms. - *Jerry Bennett*.

If I want a lid with a snug fit and a pleasing "pop" when it is opened, the neck needs to be about 3/8 inch long with a slight convex curve to it. That also means that the wood needs to be straight-grained. Otherwise, the grains will not match up very well because of the longer neck and the box won't be as attractive as it should. If the wood has a lot of figuring and grain that runs in several directions, select a style of box and lid that will look okay, even if the grain is not matched exactly. (Or add some contrasting wood to the lid.) - Boxes with straight sides and bottoms on the outside look best if the interior sides and bottom are also straight. This might mean getting an extra scraping tool. -*Janice Levi*.

It seems that the larger the box, the faster the outer portion appears to go past the tool rest.. I have also noticed that the deeper the box, the longer the tool needs to be, to reach the bottom. After much consideration and discussion with fellow turners, I have formed the conclusion that larger boxes may weigh more than smaller boxes. I have also become aware that a box does not have to be in the shape of a square or rectangle. (A very dedicated woodturner taught me that) Woodturners are such free thinkers, always thinking outside the box. - *Jerry Alspaw*.

Turning Techniques:

Deep boxes are more difficult to hollow than shallow boxes.- *Bill Berry*.

I have to make a jam chuck to turn the bottom, that's always a challenge. - *Diana Gahagan*.

Of course a good fit of the lid is the most important and most difficult to obtain. I learned that the box and the lid move and that a good fitting lid can become loose or tight later. - *Randall Hassig*.

I learned that you don't have to make a perfect lid fit on boxes that are to be used. I didn't know that I could make something useful. A 3/8" beading tool does a nice job on the bottom inside. Knots in finials are hard to turn

(Continued on page 4)

From the Box Makers - (Cont'd)

(Continued from page 3)

but add character. - *Luna Ford.*

I do not sand tenons or receptacles for tenons, it may sand unevenly. I always make a tenon on the box, not the lid. I use homemade faceplates and glue blocks. Part lids, pre-turn to 3/8 inch and set aside for a time to let wood dry and stabilize. For straight sided shallow boxes use a heavy skew with sharp point pushed straight in for hollowing. Use scraper for sides, specially ground scrapers are used for bottoms- special ground to clean up tool marks, (a radius on bottom corner is much easier to clean up than right angle.) I have made a small set of Ellsworth type cutters for hollowing other shapes. - *Bob Brown.*

The greatest challenge is to make the rabbets so that the lid would fit the box perfectly - *Andy Chen.*

I turned 10-12 boxes last month, taking from 3+ hours to about 1 1/2 hrs by the end. Following Richard Raffan's "Turning an End Grain Box" (Chapter 4 of Turning Bowls) approach. I turned the lid interior first - making certain the lid flange was a true cylinder with no taper. I found that the lid fits better if the flange is at least 3/8" long and 1/2" is even better. I hollowed the interior with gouge and round scraper, marked depth on outside, and shaped as much of the exterior as I could. With the bottom chucked up, I cut a slightly tapered flange on the base and kept checking for fit with the lid. I learned to slow the lathe speed while checking this fit - one nearly got away from me. A nice burnish defines the proper diameter and I carefully reduced the rest of the flange to this diameter. I did better by leaving the fit very tight at this point because both pieces move some in the next couple of days. I hollowed the inside with gouge and scraper, marked hollow depth on the outside, and shaped much of the base with spindle gouge and skew. I finished the inside same as the lid. With the base still chucked, I jammed on the lid, brought up the tailstock, and shaped the rest of the top. I took the tailstock away to do the final shaping and sanding on the top. A couple of rings cut into the end grain top work well and can help disguise tear out. It's a good idea to look at the overall profile at this point and think about how the remainder of the base needs to be shaped. I finished the exterior the same as interior before removing it from the base. If I needed to loosen the fit a bit - now is the time to do it - 220 grit works well. I reverse chucked the lid using the flange (gently) at this point. Then with tailstock in place as long as possible, I shaped the lower half and bottom. I sanded as necessary and applied finish. I finished the inside same as the lid. A bit of CA glue, wiped on before final cutting the lid and base flanges seems to help reduce tear out in this area. - *Kevin Turco.*

I like to complete the top of the box first then if there is a problem making the bottom fit it can be machined clean and started again. I try to make the top recess 90 de-

grees. The length of the recess should be about 3/16" to 1/4". The bottom tenon must have a slight angle, about 2 degrees is perfect. The lid should be snug when it is fully mated. Getting the fit can be achieved with a scraper or if you are confident, a skew. However, using 240 grit sanding paper works a charm and removes the material slowly so you lower the risk of missing the size. Above all, take your time with lots of test fits. - *Brian Laing.*

I found that making two boxes takes less than twice the time of one (but still more than three hours for me). Some boxes look better with a square bottom but I have had trouble getting it flat. A heavy 1/2 square section scraper can level the bottom and continuing the final cut up along the side produces a smooth transition and good sidewall. I made jam chucks for working the interior and exterior lid surfaces but found that working the bottom of a deep box was better with a long "pedestal" jam chuck that fit tightly down in the bottom of the box. This was the first time I had tried leaving the bottom just a bit thicker than desired, and then after some careful measuring, I reverse chucked and turned the bottom down to the desired thickness. Easier to do exact work on the bottom rather than down in a dark hole. - *Tom Enloe.*

Finishing:

I use sanding sealer as a first coat, then a sealer coat of something, high friction polish, or even the new French Polish works great. When it's off the lathe it gets buffed. - *Diana Gahagan.*

I used 209 and Hut wax buffed with a paper towel. - *Luna Ford.*

Oily wood- Cocobolo etc. either no finish, buffed and waxed or for a high shine, spray lacquer buffed. Other woods: Simple boxes - 209 buffed. Boxes with exotic wood inlays - Spray lacquer. - *Bob Brown.*

I finished it with Waterlox. It took me one solid weekend to make it. - *Andy Chen.*

Finally, at low speed, I applied finish to the interior - either oil-wax or oil, then garnet shellac, then wax. Also I avoided applying finish to the flange areas - *Kevin Turco.*

Another trick I know is sanding the inside of a box when there is end grain tear and power sanding can not be used. Hand sanding can be accelerated by using normal finishing wax with 180 grit paper. The wax will be dissolved with the normal cellulose sanding sealer. - *Brian Laing.*

Make an attempt to learn how to use Liberon and other hard waxes before streaking up your box. The wax goes on the buffing pad, not on the box. (Although if the box is small and you are using a high rpm, it can still work to apply a tiny amount of wax directly to the box.) - *Janice Levi.*

Since I was going to spray on the finish, I cut the lid just a hair loose and then applied a few extra coats of polyurethane finish with a light 400 grit sanding between coats. This allowed me to "tighten up" the lid to just the right suction fit. As always, applying sanding sealer be-

(Continued on page 5)

A Club Challenge Freedom Pens Project

By: Don Fluker

Don't forget our troops this Christmas. Make a pen for the Freedom Pen Project

At the October meeting I collected 20 pens—all from Randall Hassig Way to go Randall.

Last month I sent another 37, bringing our clubs contribution to 109. That includes the 11 from the SWAT hands-on sessions.

Here are some of the numbers that other Texas Clubs have done according to the FPP.

Hunt County Woodturners	24
East Texas Woodturners	318
Golden Triangle Woodturners	110
Hunt County Woodturners (Hunt County Fair)	732
Hunt County Woodturners	182
Hunt County Woodturners (Curley Woods turn-a-thon)	325

There were only a few other clubs from other states listed. All of these numbers were as of Oct 18, 2004 This the latest of the total stats:

21,922 Pens Received as of October 29, 2004

540 of the 21,992 received on October 29, 2004

18,696 Shipped (2,308 shipped October 26, 2004)

3,017 - Pens Ready To Ship

From the Box Makers (Cont'd)

(Continued from page 4)

tween sanding grades highlights any remaining scratches that need attention. – Tom Enloe.

I made a total of five boxes for the swap, but ended up giving one as a gift leaving four to swap. I got much faster at box making from all that practice. The first box (the one I gave away) I finished the inside with Hut pen polish, and the outside with 4 coats of lacquer thinned 50% and padded on (off the lathe). The other four boxes were finished entirely with Hut pen polish, inside and out. Finishing with Hut was done in stages; as soon as I completed sanding a surface (say, the inside of the base) I would apply the finish. Then I would continue turning, then sanding, and finally finishing the next part of the box. All the boxes were given a coat of paste wax. – Marty Kaminsky.

Library Corner

By: Tom Enloe

FINALLY, we received the two DVDs (no VHS choice) that I paid for this summer at the Utah Symposium (Aug. 2004 Newsletter). Since this was the 25th anniversary meeting, they had invited ALL previous demonstrators to participate in the Instant Gallery and were putting together a professional DVD of the entries. The Gallery was spectacular so I expect the DVD to also be great but I was not able to copy it to VHS. Fortunately Janet and Joe Landis were willing to convert it for me and it should be available at the November meeting.

Also at the Utah show, I purchased the "Bowl Battle" DVD (again no choice) showing two different ways to turn a bowl featuring Stuart Batty and Mike Mahoney. As you proba-

bly know, these two are great friends who delight in "needling" each other. It should be a very funny and informative tape because these two expert turners have very different approaches to making a bowl. Each method works and we can learn from each. Again, Janet and Joe are converting this tape to a VHS for the next meeting.

The club is investigating a change from VHS to DVDs. Of course, this will provide much improved videos without deterioration in a menu driven format. This will allow us to jump to a particular chapter without so much "fast-forwarding" when we need to re-re-re-re-review a particular section. The DVD formats have pretty well standardized now, and the equipment price is down to about \$30 dollars. The timing on this is unknown but we will appreciate your pro/con comments on this idea.

Classified Ads

Woodturning related items of interest to GCWA Members listed as a free service.

For Sale

Shopsmith Mark V Multi tool. Good condition, motor rebuilt 5 years' ago. Includes bandsaw, jointer, jig saw, belt sander, lathe attachments and tools, sanding disks (2), router attachment, Jacob's chuck, face plates, extension table, carbide saw blade and other items. Price: \$600.00. See Randall Hassig at the next meeting or call 281-238-4326 (home), 281-243-5154 (office) or Email rlnz@sbcglobal.net (home) randall.hassig@suntroncorp.com (office)

Unused lathe shield/guard, wire cage type with some type of plastic shielding and a universal mounting bracket. Call with questions. Make offer. Bruce Dolen 713-805-1341, www.tydemandolen.com

Highlights of the October Meeting



Deer Park High School Woodworking Shop



Great Box Swap Entries

Show & Tell Entries from the October Meeting



Andy Chen



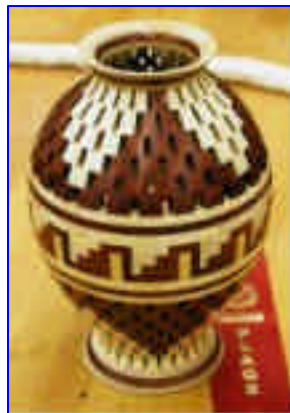
Jeff Schrader



Gene Bradley



Jerry Bennett



David Berry



Jerry Bennett



Bill Hubbard

Mentor Program

The following members have volunteered to serve as Club Mentors:

Jim Keller-----**(281) 438-1171**

By Reed-----**(979) 830-0917**

Bill Berry -----**(281) 479-8073**

Diana Gahagan **(281) 446-1590**

Marty Kaminsky **(281) 339-3297**

Ernie Bahr -----**(832) 476-3804**

Luna Ford-----**(281) 476-4159**

Brian Laing-----**(281) 580-5381**

If you would like to have one of these individuals talk with you about a particular piece, feel free to bring it to the meeting.

Calendar of Events

Scheduled Meetings & Events

November 13, 2004 ~ 9:00 AM to 3:00 PM ~ Cindy Drozda Demonstration ~ University of Houston School of Architecture

November 14 -17, 2004 ~ 9:00 AM to 4:00 PM ~ Four Hands-On Sessions ~ Diana Gahagan's Home ~ 20201 Fox Glen, Humble

November 15, 2004 ~ Board Meeting ~ 7:00 PM ~ Diana Gahagan's home ~ 20201 Fox Glen, Humble, TX

November 20, 2004 ~ GCWA Meeting ~ 9:00 AM ~ Armand Bayou Nature Center ~ 8500 Bay Area Blvd., Pasadena, TX ~ 281-474-2551 ~ www.abnc.org

December 6, 2004 ~ First Monday ~ 7:00 PM ~ The Cutting Edge ~ 11760 S. Sam Houston Pkwy W. ~ 713-981-9228

December 13, 2004 ~ Board Meeting ~ 7:00 PM ~ Greg Gonsalves home ~ 4610 Troon Circle, Pasadena, TX ~ 281-998-8662

December 18, 2004 ~ GCWA Meeting ~ 9:00AM ~ The Cutting Edge ~ 11760 S. Sam Houston Pkwy W. ~ 713-981-9228

January 3, 2005 ~ First Monday ~ 7:00 PM ~ The Cutting Edge ~ 11760 S. Sam Houston Pkwy W. ~ 713-981-9228

January 10, 2005 ~ Board Meeting ~ 7:00 PM ~ Lane Bradford's home

January 15, 2005 ~ GCWA Meeting ~ 9:00 AM ~ Location to be determined

February 7, 2005 ~ First Monday ~ 7:00 PM ~ The Cutting Edge ~ 11760 S. Sam Houston Pkwy W. ~ 713-981-9228

February 14, 2005 ~ Board Meeting ~ 7:00 PM ~ Ernie Bahr's home

February 19, 2005 ~ GCWA Meeting ~ 9:00 AM ~ Location to be determined.

March 7, 2005 ~ First Monday ~ 7:00 PM ~ The Cutting Edge ~ 11760 S. Sam Houston Pkwy W. ~ 713-981-9228

March 14, 2005 ~ Board Meeting ~ 7:00 PM ~ Wayne Stanfield's home

March 19, 2005 ~ GCWA Meeting ~ 9:00 AM ~ Location to be determined.

April 4, 2005 ~ First Monday ~ 7:00 PM ~ The Cutting Edge ~ 11760 S. Sam Houston Pkwy W. ~ 713-981-9228

April 11, 2005 ~ Board Meeting ~ 7:00 PM ~ Diana Gahagan's home



November Meeting Location

Armand Bayou Nature Park
8500 Bay Area Blvd., Pasadena, TX

November Meeting Program

Show and Tell for Turning Tools, Jigs, Fixtures, Gages and Other Turning Aids

Executive Committee

President/Past President	Janice Levi	(713) 475-2308	TJLevi@swbell.net
Vice President/Librarian	Tom Enloe	(281) 580-1905	tomtom@houston.rr.com
Treasurer	Helen Osteen	(713) 475-8150	helen@osteenjewelry.com
Secretary	Lane Bradford	(281) 353-8905	bradfwl@swbell.net
Board Member	Ernie Bahr	(832)-476-3804	ernie@jalepeno.com
Board Member/TTT Delegate	Greg Gonsalves	(281) 998-8662	the4gonzos@aol.com
Board Member	Wayne Stanfield	(936) 273-6040	wayne.stanfield@rrd.com
Board Member	Diana Gahagan	(281) 446-1590	boycegahagan@aol.com
Board Member	Don Fluker	(281) 855-8230	skewgouge1@aol.com
Webmaster	Ernie Bahr	(832)-476-3804	ernie@jalepeno.com
Newsletter Editor	Mack DeBose	(281) 444-7993	Lmdebose@swbell.net

Email: gcwa@jalepeno.com
GCWA Websites:
www.gulfcoastwoodturners.org
<http://get.to/gcwa>

Program Chairman
Greg Gonsalves

GCWA is affiliated with the American Association of Woodturners. GCWA meetings are usually held at 9:00 AM on the 3rd Saturday of each month. Check the Calendar of Events page. Annual dues are \$18 due on January 1. Dues may be mailed to Helen Osteen, 2502 Esther Ave., Pasadena, TX 77502-3239. Make your check payable to GCWA or Gulf Coast Woodturners Assn.

Internet Web Sites of Interest

American Association of Woodturners: <http://www.woodturner.org>
Robert Sorby: <http://www.robert-sorby.co.uk/turning.htm>
Wood Magazine: <http://www.woodmagazine.com>
The Cutting Edge: <http://www.cuttingedgetools.com>
Craft Supply: <http://www.woodturnerscatalog.com/index.html>
Tidewater Turners of Virginia: <http://www.esva.net/~woodturner>
Fred Holder's More Woodturning: <http://www.fholder.com>
Exotic Burl: <http://www.exoticburl.com>
San Diego WoodTurning Center, Inc.: <http://www.sdwoodturning.com>
Kestrel Creek Gallery: <http://www.kestrelcreek.com>
Hibdon Hardwoods: <http://www.hibdonhardwood.com>
Dallas Area Woodturners: <http://www.turningwood.com>
Woodcraft: <http://www.woodcraft.com>
Christian Burchard: <http://www.burchardstudio.com>
Texas Turn or Two: <http://www.texasturnortwo.com>
Southwest Association of Turners: <http://www.texasturnortwo.com>
Trent Bosch: <http://www.trentbosch.com>



Gulf Coast Woodturners
Association