

GULF COAST WOODTURNER

October 2007



PRESIDENT'S CORNER

SWAT 2007 is now history. Having 525 registrants for the event it was a record setting attendance in Wichita Falls, although it did fall short of the 2006 event in Temple. Next year SWAT will be in Waco and will be the third weekend of October. So go ahead and mark you calendars now to avoid any conflicts coming up later on. Our board of directors will need to address the conflict that SWAT 2008 will cause with our monthly meetings. We have a year to work through that, so I'm sure we'll come up with a solution.

Our Club hosted one of the rooms and we had a number of volunteers working in the room throughout the event. I'm not going to try and list all the names here because I know I'd miss some. I would like to acknowledge **Mack DeBose** for all his efforts getting the A/V system setup and keeping it all working during the event and **Tom Enloe** for coordinating our participation making sure everything came together. **Don Fluker** and **Greg Gonsalves** were there with four lathes helping folks new to turning and those buying tools and not able to wait to get home to try them out. They were very busy. A hearty Thank You goes out to all the Club members who volunteered time to help out at SWAT.

We have a number of events to staff coming up in November. Just to recap them we'll start on November 10 with three events in different areas of the metro area. On the Northwest side we'll be setup at the Gifts with Heart Build-A-Thon. On the West side we'll have a class in session at **Bill Lewis'** shop as part of the **Bonnie Klein** visit. And on the Southeast side the Club will be participating in the Armand Bayou Nature Center Fall Festival. It will be a very busy Saturday indeed. Sunday the 11th will have the continuation of ABNC Fall Festival and the Bonnie Klein Demo Day at the University of Houston. Continuing into the week will be additional classes with Bonnie Klein back at Bill's shop. The following weekend will be the general meeting plus the **Fleury Sommers'** Holiday Show and Sale at which we will have an information table and demo. Well, that should be a pretty intense two weeks with a need for a lot of volunteers and plenty of time on the lathe introducing the public to the craft of woodturning. Look for all the details in other areas of the newsletter.

As a group, we have a lot of opportunities throughout the year to get together, learn from each other and share

GCWA Web Sites:

[Http://www.gulfcoastwoodturners.org](http://www.gulfcoastwoodturners.org)

[Http://jhanley.us](http://jhanley.us)

knowledge and experiences. This occurs at the local level with local clubs; the regional level with events like SWAT; and the national level with events like the AAW Symposium and Utah Woodturning Symposium. This is just a sampling of the various gatherings. All this has a couple of common threads. The main thread is the interest in turning. The other common thread bringing all this together is the American Association of Woodturners. Are you a member of AAW? If not, you should consider becoming a member soon. While it is not mandatory, membership has both direct and indirect benefits.

Members of AAW receive *American Woodturner*, are covered under the AAW insurance program when conducting classes and demo sponsored by the local clubs, have an opportunity to apply for Education Opportunity Grants, and have the opportunity to attend the AAW Symposium. As is the case for the vast majority of other woodturning clubs, GCWA is chapter of AAW which provides a foundation for the organization along with support for the local chapter in numerous ways. Essentially, AAW is the nucleus that brings the world of woodturners together. To accomplish this AAW is dependent on the memberships, so joining AAW not only provides many direct benefits it also provides the support for our local Club and most of the opportunities and events we enjoy throughout the year. If you're not an AAW member, or if you've allowed your membership to lapse, please consider joining now.

Speaking of events and opportunities, the board has an action item for the November board meeting to identify the chairs for the GCWA 2008 Spring Retreat. Yes, its that time already! There is a lot of planning required to put the retreat together and make it the success we all expect and enjoy. . We need to identify chairs for the event, programs, equipment, registration, facilities, food, communications, and wood & supplies. If you have an interest in leading any of these areas contact a board

(Continued on Page 3)

October Meeting
The Cutting Edge
11760 S. Sam Houston Parkway West
Houston, TX

CLASSIFIED ADS

Woodturning related items of interest to GCWA Members listed as a free service.

Woodturning Instruction

Classes are now being scheduled for October and November. One on One woodturning instruction. Your Shop, Your Lathe, Your Tools, Your Pace. Avoid the frustration of learning to turn by reading books and watching videos. 8 hours of instruction and turning exercises. Weekdays or Weekends.

\$125 per day. Call or email for more information or to schedule a time. Contact: Bill Berry – bberry2301@aol.com, 281-479-8073

FOR SALE

Jet 1642 Lathe

Variable Speed Motor - 1.5 HP 110 Volt.
Contact: Wayne Stanfield for price and details.
Phone (713) 907-4409. Email wayne.stanfield@rrd.com

MEMBERSHIP

Three new members joined GCWA in September. Welcome to:

Dayton Dickey, John Gay, and Stacie Grange

Also we have one returning member:

Steven Russell.

Super Raffle

By: Jay Ebner

The monthly meeting raffle is a success. Since January 2007 we have raffled items worth approximately \$1,122.00, and I hope everyone has enjoyed them all. For the past 2 years we have had a "Year End Super Raffle" item in addition to our monthly raffle items. In 2005 it was a Penn State mini-lathe; in 2006 it was a \$200 gift certificate from Craft Supplies. So for this year we plan to have another Year End Super Raffle item; a Rikon mini-lathe. That is right; one brand new Rikon model 70-100 12"x16" lathe complete with an 8" tool rest, spur drive, live center, 3" face plate, knock-out bar and a manual.

So this is how the Year End Super Raffle works. After raffling all of the items in October 2007, we will pick two tickets, the winners of which will be eligible for the Rikon mini-lathe Year End Super Raffle in December 2007. We will repeat this at monthly raffles in November and December 2007 which will result in six eligible winners for the Rikon mini-lathe. At the December meeting, after the monthly raffle, we will conduct the Year End Super Raffle and draw the name of one of the six eligible winners; who will win the Rikon mini-lathe. Unlike the monthly raffle, you need not be present at the December meeting to win the Year End Super Raffle.

Now remember the proceeds from the raffle not only pays for the raffle items; but also supports the cost for the meeting refreshments. So get yourself a donut (or two) and a drink (or two) and drop a sawbuck (i.e. \$5) on the raffle; in return of which we will give you six tickets. Who knows, if you do not win the Year End Super Raffle, perhaps you will win some of the other great raffle items; if not then the donuts and drinks together with the knowledge that you are supporting a very great organization will be your reward.

Again I do appreciate your support and look forward to seeing each of you at the next meeting.

October Program

By: John Van Domelen

This month's demonstrator is **Randall Hassig**. He will be demonstrating Basic Instruction on Turning Spheres as taught in the Hands-on Session at the 2007 Spring Retreat.

Randall holds engineering degrees from Ohio State University and Texas A&M and an MBA from the University of Dallas.

He has been married 23 years to Linda Baldwin and has two sons, Nicholas age 20 and Zachary age 17.

He has been turning since buying a used Shop Smith in 1990.

He is currently turning his favorite items, utility bowls and pens, on a Jet Mini Lathe and Delta variable speed lathe.

His other activities include wood carving, fishing and reading.

SWAT- Reverse Turned Ornaments: Dan Henry

By: David Morley

Dan took 4 identically sized blanks about pen blank size or somewhat larger and taped them together on both ends with painter's tape, about 3 wraps. With a spacer in the chuck to reduce the clamping size he chucked it and used a cup center on the tailstock to support it. He turned the center down to a smooth radius leaving about 1/2" on each end, then sanded, sealed and finished it. After removing the tape he used yellow glue to permanently glue the blanks together, carefully aligning the curves and left it to dry overnight.

Mounting the glued blank in a chuck he drilled a 1/4" hole through each end of the blank. He put the blank onto a pen mandrel with 5/8" bushings and turned it, following the contour of the inside down to the bushings, then sanded it.

Turn the icicle and finial to match the 5/8" ends of the of the center section and turn a 1/4" tang on each for gluing into the

(Continued on page 5)

Top This!

By George Kabacinski

By now everyone should know that we are a participant in the Gifts with Heart Build-A-Thon on Saturday, November 10th from 10:00 am to 3:00 pm. The event will be hosted at the Lowe's store on Highway 6 and FM 529 in Northwest Houston.

We need tops! Lots of tops! OK, 500 to be specific. We could have more, but 500 is the number requested by the event sponsors. **We also need volunteers** to help out at our station and with the demo. We have 3 turners (well, ok, 2 turners plus me) for the demo, so we just about have that covered. However, we need a few people to guide the kids in decorating the tops and generally represent the Club. It's not a difficult assignment, just one that takes a bit of your time and a willingness to get involved with the kids at the event.

Oh, did I mention we need tops? We do, so get out to the shop and turn a few [dozen]. Since the kids will be decorating them it would be best for the tops to be of lighter colored wood and at least 1.5" in diameter. I'll be collecting tops at the October meeting, but don't stop there as we can work out some collection scheme to pick them up through early November.

Armand Bayou Fall Festival

By George Kabacinski

The Armand Bayou Nature Center Fall Festival is just around the corner. The dates are on our very busy weekend of November 10th & 11th. Hours are 10:00 – 4:00 both days. So far we only have a couple of people signed up to participate – literally only two people.

Earlier this week I had received a note from the event coordinator which contained the following. "Your attendance last year was meant to be "payment" for an earlier meeting your group held, but now this invitation is offered because the items made and shared with the kids made a big hit." Obviously we made a difference with this event last year and we can do it again this year, but only if folks sign up and show up. Drop me an e-mail, call me or hand me a note at the meeting to let me know when you are available to support this event.

President's Corner (Cont'd)

(Continued from page 1)

member to discuss the opportunity to become a part of the team that make this event a big hit each year.

By now, you should be getting the idea that our Club functions as well as it does because of the dedication of many volunteers. We can not, however, expect that someone will continue in a role forever. Most of us enjoy a degree of variety and doing the same volunteer function for an extended period of time can take a toll on people. For example, for several years running **Mack DeBose** has done an excellent job with our newsletter and has expressed a desire to turn that role over to someone new. I'd like to welcome **David Morley** to the job of newsletter editor / publisher. Mack and David are working jointly on this issue and David will be picking up the responsibility going forward. Welcome David! I want to extend a heartfelt Thank You to Mack for all his efforts in making the newsletter the quality publication it is and for the many, many hours of effort he has put into the publication over the years. Being the dedicated individual he is, Mack already has a new role in the Club as A/V Coordinator having picked up that role from **Reggie Keith** a couple months back. Reggie continues in his long-term role handling the monthly raffle which is both fun and a serious endeavor because it supports our refreshments at the monthly meetings as well as contributes to the finances required to operate the Club. Thank You one and all!! Have fun, be safe, and keep turning.

George

Club News & Announcements Email Updates (Again)

We still have some members whose email addresses need to be updated. If you are one of them, please send your new email address to gcwa@swbell.net if you want to continue to receive Club emails and the Newsletter.

Membership Map

The Members' Map on the GCWA Website is a very useful feature and a real asset to the membership. But it needs to be updated. If you have moved or not listed please go to the Website and make the correction or enter your location if you are not there. The Map is only accessible to logged in members.

Official Address

The official address for the Gulf Coast Woodturner's Association has changed. It is now:

GCWA
26227 Cloverland Park Ln.
Cypress, TX 77433-1360

The official email address is:
GCWA@swbell.net.

Board Report

By: David Morley

It was a quiet evening at George's house near Cypress as the GCWA Board members convened for their monthly meeting on Monday, October 1st. There was a lot to discuss but the Board stayed on topic to get through the principle items in the two hours designated for the monthly meeting. Here's a summary of the major items addressed in addition to the typical committee reports, past meeting minutes and other formalities.

- **Bonnie Klein** is being hosted by GCWA November 10th—14th, coordinated by **Bill Lewis**. There are a number of openings for the demo on Sunday, but the classes are nearly full, so get your reservations in to Bill Lewis or other Board member. The demo and classes run from 9:30 until 4:30 with an hour for lunch. The classes will be held at Bill Lewis's house and the demo will be at U of H. Lathes need to be at Bill's house by Friday the 9th.

- **Tom Enloe** reported that Jay has the updated library database. Tom has completed replacing all of the old covers. All DVDs that have been gone so long they are deemed to be lost have been replaced from the master DVDs. Tom has a new DVD of Kaleidoscopes.

- Now that **Mack DeBose** has taken over lead on the A/V efforts he needs relief as the Newsletter editor / publisher. **David Morley** has assumed these duties beginning this month.

- Venues and dates for the **Spring Picnic** were discussed. The Board agreed that from a comfort standpoint, April is the best month and interferes least with other events. **Bill Berry** is seeking a suitable location.

- The Club participation with **Gifts With Heart** was discussed along with the accompanying demo on November 10th.

- **Dale Barrack** presented samples of a high quality tri-fold brochure to be used for recruiting. It will be out at demos and other hosted events, and will be available to members to share with friends. Please use your judgment since they aren't cheap. Larger quantities may be ordered in the future if they are successful.

- The Board voting members reviewed the Release of Liability provided by **Gifts With Heart**. Several revisions were made. **George** will follow up with Gifts With Heart.

- There was continuing discussion around participation in the **Fleury Sommers'** Art Show and Sale at the Museum of Printing History. GCWA will have an information table and turning demo. This event is November 17th. Members who show and sell art must make their own arrangements directly with Fleury as the Club will not be directly involved in the sales.

- The President voiced a need for an Event Coordinator to keep track of events so that he doesn't get blindsided. **Randall Hassig** volunteered to a scaled down position he described as Calendar Keeper. He will keep track of recurring events so that there is sufficient warning for the Club to prepare.

- There was discussion on the need for a permanent address for the Club. **George Kabacinski** volunteered his address. When he is no longer President he will forward the mail as appropriate on a regular basis.

- A Lead is needed to take over coordination of the tasks for next year's Retreat. Some names have been mentioned as possible candidates for Program Chairman, missing in the past, which will take much of the load off the Lead. **Volunteers** are needed.

- There was some discussion on the need to consolidate the by-laws. There have been a couple of runs at this task in the past but more work needs to be done.

- The New Turner Class at this year's Retreat was a huge success and some have voiced an opinion that a New Turner Class beyond Retreat would help keep those new turners focused and gaining skills.

The Board covered a lot of territory in the two hour session with a number of action items for Board members and others to work on following the meeting. Members are encouraged to become actively involved in the operation of the Club. Find an area of interest to support the Club's operation and get involved. If you have any questions for the Board or topics you'd like the Board to address please contact any one of the Board members or join us at a future Board meeting.

Show and Tell

By George Kabacinski

At the September meeting we didn't have our normal show and tell. Instead two guest judges from the Houston Center for Contemporary Crafts reviewed the work brought in. As in the past, members were able to bring in pieces that had been shown at previous sessions. Some members also brought in new works. The members who displayed new works at the HCCC event are welcome to bring those pieces in to a regular monthly meeting for show and tell.

While on the subject of Show and Tell it's good to clarify one of the ground rules. The concept here is that as a turner advances in skill the level at which his/her work is entered into the Show and Tell should also move up. The general guideline is that once a person has received three ribbons at one level they should advance to the next level. Other considerations can also cause advancement into a higher category such as the group voice of the membership. If it's widely acknowledged that a turner is placing work in a category lower than their skill level they may be asked to move their submissions up into the next higher skill level. This should be viewed as a compliment of the group and not an attempt to embarrass anyone. Also, not every new member will start out as a beginner as we have many individuals join the Club well beyond that skill level. So please take it as a compliment if your work is suggested to be brought to a higher level of judging.

The monthly Show and Tell is a great way to see work of other members, learn how they do great turning and get input on your work. The moderator typically draws information from the ribbon winners on how they did certain aspects of their work, but everyone is free to ask questions and to ask advice from the audience. The Show and Tell is a friendly and informative part of the meeting and everyone is invited to participate, no matter what your

Holiday Show and Sale

By George Kabacinski

The **Fleury Sommers'** Holiday Show and Sale will be November 17th at the Museum of Printing History. Members participating in the show and sale must make arrangements directly with Fleury. Details on logistics and fees were included in the September newsletter.

The Club will have an information table and demo from 10:00 am to 5:00 pm. We need members to participate in representing the Club and staffing the demo using one of the Club's mini lathes. Please contact George Kabacinski to sign up for this event.

For additional information on having a table to sell your works at the Holiday Show and Sale please contact Fleury Sommers directly at: 713-385-5443 or e-mail her at fsomers@sommersassoc.com.

For general information on this event check out the web site at www.fleurygallery.net.

SWAT- Reverse Turned Ornaments: Dan Henry (Cont'd)

(Continued from page 2)

center section. Use sand paper if the alignment is not perfect.

The pen mandrel is an innovative way to force consistent sizes of the turned ends of the ornament.

SWAT - Three Ways to Turn a Sphere:

Anthony Harris

By David Morley

Anthony started off with a bang, stunning everyone by rough turning a sphere, then smooth finishing it in about 30 seconds! He used his 1st method which involves using a hole saw with the teeth ground off or similar metal tube to smooth a roughly turned sphere very quickly.

His 2nd method requires a ring gauge to test how spherical the forming sphere is during the shaping process. The gauge is roughly about 1/3 the diameter of the of the sphere and by looking for gaps under the edge the turner can tell where material needs to be removed. The size of the gauge is not critical.

The 3rd method is called the billiard ball method since this is the way billiard balls were made from ivory. The turner turns their best sphere by eye, then finishes it with the help of a cup chuck. A short spindle is mounted in a chuck or faceplate and the exposed end is hollowed like the inside of a coffee cup to a diameter close to but smaller than the diameter of the sphere. The cup narrows slightly as it gets deeper. Press the sphere into the cup 90 degrees from the orientation it was turned in, and with a skew or parting tool lightly score the largest diameter of the sphere until the line goes completely around the sphere. Turn the sphere back to the original orientation and turn the sphere until the score line just disappears. Reverse the sphere in the cup chuck and cut the other hemisphere until the score line disappears. Your sphere is complete.

When he had completed all 3 methods he had 20 minutes left so he quickly started a box, hollowed it out hand threaded both top and bottom, then turned the box into a sphere and carefully matched the grain so that when the box was closed the grain lined up. What a performance!

Gremlins in the Shop

By: Mack DeBose

I am convinced that I have gremlins in my garage and my shop. Sometimes they also patrol my office and other areas of my home. I know that I have them, even though I have never seen one, because of the evidence of their misdeeds. How else can you explain the reason my tools and other needful things are always difficult to find

Whenever I need a specific tool that I know I have and have used sometime in the past, I must search every inch of the area in order to find where the gremlins have hidden it. They are very clever. Sometimes they hide it in plain sight and often they manage to hide it near the last place where it was used. They even know when a tool has a specific storage spot and that I have forgotten about it so they sneak it back and I continue to look for it in all the wrong places. They obviously are particularly fond of this approach when the subject tool was purchased a month or so earlier and never used.

My gremlins do not limit themselves to hiding tools. They are also quite adept at hiding other things such as computer CD's, keys, tool discount coupons, pencils and

important, time sensitive documents. They are also very sneaky. Often times when I temporarily lay something down, intending to pick it up in a few minutes, it completely disappears and re-appears at some other location where I am sure I did not put it.

There is also a special gremlin that follows me around throughout my work area. Its job is to immediately scoop up any small screw, part, etc. that I drop on the floor and either dispose of it for all time or re-locate it somewhere I would never think to look. This gremlin is never absent and must take its job very seriously since it is very good at it.

I often wonder if my gremlins are unique or are they part of a larger corps of gremlins that administer their sinister tasks at other shops and homes. Maybe you have some too. I don't know of any way to get rid of them but someone (I think it was my father) once told me that their misdeeds can be minimized if everything has a place and everything is always put back in that place after use. I can't tell you if this will work as I have never been able to maintain that practice.

I must get back to the search for my special chuck key (the only one that will fit this chuck) just as soon as I find my coffee cup. Of course, the coffee is cold by now (gremlins again).

SWAT- Turning Spirals: Stuart Mortimer

By David Morley

I managed to see 3 of Stuart's sessions, and considering the wealth of turning demonstrations available at SWAT this year, it will give you some idea of the caliber of turning he was doing.

I won't even attempt to explain the layout required for marking spirals. If you didn't get to see one of his demos, check the handout to learn more about that.

He made open spiral turnings by drilling out the inside first, then using an Arbortech or rasp to open up the spirals until he breached the inside. He would then refine the bines (spiral bands) using the Arbortech and then would wrap sandpaper around the bine to make it round, pulling it back and forth. The bines became round quite rapidly.

Stuart made a goblet with a spiral stem without using any marking at all. After creating the goblet with a stem about 3/8" in diameter he stopped the lathe and using a riffler (coarse file) he would lay the riffler across the stem at about 45 degrees and push it across the stem while rotating the chuck rhythmically with his other hand. Working both hands at the same time he quickly made a spiral pattern the length of the stem. After the pattern was well defined he switched to a chainsaw file which was less coarse than the riffler to refine the spiral. Then he sanded it and prepared it for finishing. It was amazing how rapidly he was able to produce a goblet from start to finish.

Stuart also made pigtail twists that instead of being the same diameter from one end to the other grew slightly in size toward the middle then narrowed until the tip came to a long slender point. In the small amount of space available I can't even begin to describe the process and I'm not sure I'll ever be able to duplicate it, but it certainly was fascinating to watch!

This was Stuart's last appearance, at least for the near future. He has decided to spend more time with his family and in his own shop, so if you missed him it may be quite a while before the opportunity returns. I'm sure everyone that did see his demonstrations were captivated by his humor, devotion to safety (the Arbortech is a piece of equipment to be approached with great respect lest bodily parts become detached), and his incredible talent and innovation.

GCWA to host Bonnie Klein

By Bill Lewis

The Gulf Coast Woodturner's Association is pleased to welcome Bonnie Klein to Houston in early November 2007. She will be here for a demonstration on November 11th and will provide several "hands on classes" on November 10th, 12th – 14th. For those who haven't had the chance to see Bonnie, this is truly an opportunity one should not miss.



This is an update from earlier announcement sent out on the email list and posted to the website. Due to overwhelming interest in her two day box class, we have had to replace the stool class with a combination box class for more experienced turners. As this is written, (on October 10th) there are no openings in the basic class and two openings in the combination class. Please contact me for more details or information.

Bonnie has been involved with woodturning since the early 1980's. In 1986 she designed the small Klein Lathe which has been in production for the past 20 years. In 1992 she introduced the Threading Jig as an accessory to the lathe for cutting threads in wood. Bonnie has produced 5 turning videos which have now been converted to DVD's and in 2005 wrote a woodturning project book. She has demonstrated and taught workshops in many countries as well as all over the USA. In 2003 she was awarded an AAW Honorary Lifetime Member in recognition of her contributions to woodturning.

You can learn more about Bonnie from her website.

<http://www.bonnieklein.com/>

We haven't gotten all the details of her demonstration yet, but it will most probably include threaded box spin tops, acrylic threaded boxes, chatter work and proper use of various turning tools and equipment. The demo will be Sunday November 11th at the **University of Houston** from 9:30 to

4:30. (You will need to bring your own chair.)

We are planning the following classes. All classes will be from 9:30 to 4:30

Basic class - One day - 6-8 students, 6 hours – November 10th

This is primarily for the new turner or one who wants to improve their technique. Students will learn to shape and sharpen their tools. Bonnie's goal is to achieve the best possible surface on the wood right off the tool. Basic cutting theory will be taught in order for students to understand how to achieve this also. A good sharp tool, used properly will produce a good cut. Also included will be skew chisel work, chatterwork, coloring with felt pens and several of the projects from her recent book.

One opening

Combination Box Class – One day, 6-8 students, 6 hours - November 12th This will be the box class described below with the option to make a fitted lid or utilize the threading jig to cut the threads for a threaded box. *Relatively experienced turners only.*

Two openings

Boxes with slip fitted lids – One day, 6-8 students, 6 hours – November 13th. Basic box making techniques and skills will be learned. Each student will make a box from start to finish. Turning a box involves excavating material, fitting a lid, and reverse chucking. Ornamentation, in-

serts, other materials (such as bone & acrylic) and nested boxes may be explored. Full

Threaded Boxes - One Day, 6-8 students, 6 hours – November 14th

This will be the second day for students completing the one day Boxes with fitted lids class, or a one day class for students with slip fit lids experience. Boxes with threaded lids have been Bonnie's passion for many years and in the class each student will turn threaded boxes and will explore acrylic, bone, nested boxes, inserts and ideas for ornamentation. Threading Jigs will be used to cut the threads in this class. Full

Costs:

Demonstration \$35

Classes One Day \$125, if one takes the two day box series class the cost is \$200.

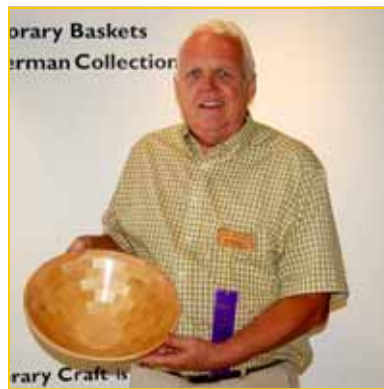
We are accepting sign-ups now by contacting Bill Lewis (wwl@wwl-associates.com or 281 496 5797). Payment can be made at the October meeting. We will accept payment for the demo at the door, but would like an indication of the number that would like to attend.

Snapshots from the September Meeting at the Houston Center for Contemporary Craft



Kendall Westbrook and Bill Tilson demonstrate the use of dyes to enhance wood turnings.

HCCC personnel Deborah Kirkpatrick & Susanne Sippel critique the Show & Tell entries.



Jerry Collins' segmented bowl was awarded Best Of Show



Photography by Ric Taylor

MENTOR PROGRAM

The following members have volunteered to serve as Club Mentors:

Jim Keller -----(281) 467-2866

Larry Zarra----- (281) 528-9183

By Reed----- (979) 830-0917

Bill Berry ----- (281) 479-8073

Marty Kaminsky (281) 339-3297

Luna Ford ----- (281) 476-4159

Brian Laing----- (281) 580-5381

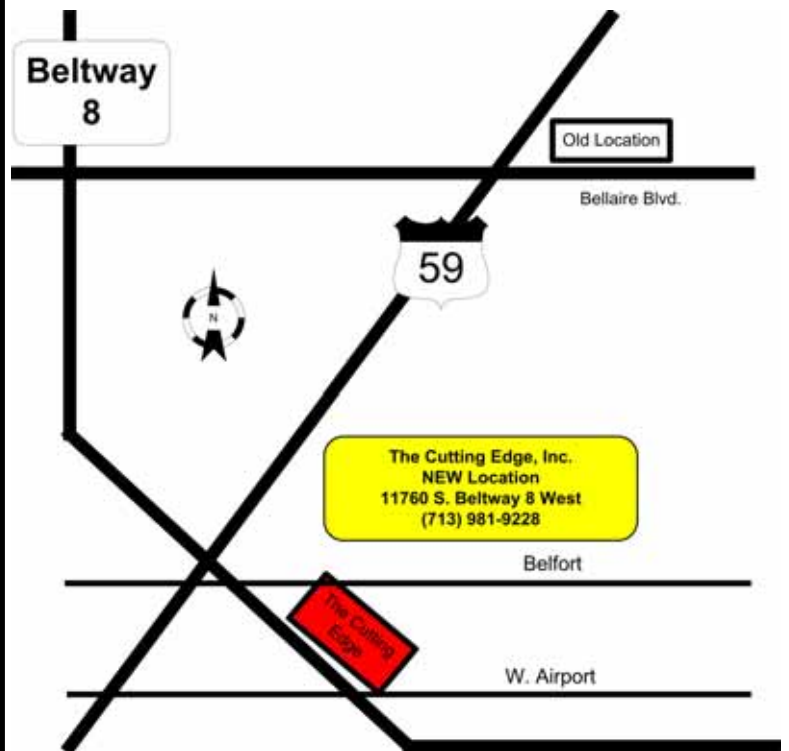
If you would like to have one of these individuals talk with you about a particular piece, feel free to bring it to the meeting.

Scheduled Meetings & Events

Meeting dates and locations are subject to change.

- October 20, 2007** ~ GCWA Meeting ~ 9:00 AM ~ The Cutting Edge ~ 11760 S. Sam Houston Pkwy W.
- November 5, 2007** ~ First Monday ~ 7:00 PM ~ The Cutting Edge ~ 11760 S. Sam Houston Pkwy W. ~ 713-981-9228
- November 5, 2007** ~ Board Meeting ~ 7:00 PM ~ Randal Hassig's home
- November 10 -11, 2007** ~ Fall Festival at the Armand Bayou Nature Center ~ 8500 Bay Area Blvd., ~ Pasadena
- November 17, 2007** ~ GCWA Meeting ~ 9:00 AM ~ Clark's Hardwood Lumber ~ 700 E. 5-1/2 St., Houston
- November 17, 2007** ~ Fluery Summers Art Show ~ Museum of Printing History ~ 1324 W Clay St, Houston
- December 3, 2007** ~ Board Meeting ~ 7:00 PM ~ Dave Barziza's home
- December 3, 2007** ~ First Monday ~ 7:00 PM ~ The Cutting Edge ~ 11760 S. Sam Houston Pkwy W. ~ 713-981-9228
- December 15, 2007** ~ GCWA Meeting ~ 9:00 AM ~ Fox-Fire Studio ~ 105 South 105 St., Richmond, TX
- December 19, 2007** ~ Gifts With Heart Day ~ Lowes, FM 529, Houston
- January 7, 2008** ~ Board Meeting ~ 7:00 PM ~ Clyde Collier's home
- January 19, 2008** ~ GCWA Meeting ~ 9:00 AM ~ Houston Community College
- February 4, 2008** ~ First Monday at The Cutting Edge ~ 11760 S. Sam Houston Pkwy W. ~ 713-981-9228
- February 4, 2008** ~ Board Meeting ~ 7:00 PM ~ George Kabacinski's home.
- February 16, 2008** ~ GCWA Meeting ~ 9:00 AM ~ Location to be determined.
- March 3, 2008** ~ First Monday ~ 7:00 PM ~ The Cutting Edge ~ 11760 S. Sam Houston Pkwy W. ~ 713-981-9228
- March 3, 2008** ~ Board Meeting ~ 7:00 PM ~ Lane Bradford's home

October Meeting The Cutting Edge 11760 South Sam Houston Parkway West Houston, TX



October Meeting Program

Randall Hassig will demonstrate the Turning of Spheres

EXECUTIVE COMMITTEE

George Kabacinski - President
(832) 349-3006
gkabacinski@gmail.com

**Tom Enloe - Past President/
Librarian/SWAT Representative**
(832) 229-4404
tomtom@houston.rr.com

Ben Ball - Vice President
(281) 494-0396
benball@alum.mit.edu

Jay Ebner - Treasurer
(713) 777-7019

**Lane Bradford - Secretary/
Membership Chairman**
(281) 353-8905
bradfwl@swbell.net

Clyde Collier - Board Member
(281) 487-2143
clutha2143@sbcglobal.net

Randall Hassig - Board Member
(281) 238-4326
rhassig@sbcglobal.net

**John Van Domelen - Board Member/
Website Technical Director**
john@texasturner.com

Dave Barziza - Board Member
(713) 661-5941

Dale Barrack - Website Creative Director
(281) 358-8529

David Morley - Newsletter Editor
(979) 255-8183
david.w.morley@gmail.com

Email: gcwa@swbell.net

GCWA Websites:

www.gulfcoastwoodturners.org

<http://jhanley.us>

Mailing Address: GCWA

26227 Cloverland Park Ln.

Cypress, TX 77433-1360

Program Chairman
John Van Domelen

Copyright 2007 GCWA

GCWA is affiliated with the American Association of Woodturners. GCWA meetings are usually held at 9:00 AM on the 3rd Saturday of each month. Check the Calendar of Events page. Annual dues are \$18 due on January 1. Dues may be mailed to Jay Ebner, 7806 Burning Hills Dr., Houston, TX 77071-1311. Make your check payable to GCWA or Gulf Coast Woodturners Assn.

Internet Web Sites of Interest

American Association of Woodturners: <http://www.woodturner.org>

Robert Sorby: <http://www.robert-sorby.co.uk/turning.htm>

Wood Magazine: <http://www.woodmagazine.com>

Rockler: <http://www.rockler.com>

The Cutting Edge: <http://www.cuttingedgetools.com>

Craft Supply: <http://www.woodturnerscatalog.com>

Tidewater Turners of Virginia: <http://www.esva.net/~woodturner>

Fred Holder's More Woodturning: <http://www.fholder.com>

Exotic Burl: <http://www.exoticburl.com>

San Diego WoodTurning Center, Inc.: <http://www.sdwoodturning.com>

Kestrel Creek Gallery: <http://www.kestrelcreek.com>

Hibdon Hardwoods: <http://www.hibdonhardwood.com>

Dallas Area Woodturners: <http://www.turningwood.com>

Woodcraft: <http://www.woodcraft.com>

Christian Burchard: <http://www.burchardstudio.com>

Southwest Association of Turners: <http://swatuners.org>

Trent Bosch: <http://www.trentbosch.com>

Central Texas Woodturners: <http://www.ctwa.org>

Arizona Silhouette: <http://www.arizonasilhouette.com>

The Wood Turning Center: <http://www.woodturningcenter.org>

Woodturning Online: <http://www.woodturningonline.com>



Gulf Coast Woodturners
Association