

GULF COAST WOODTURNER

September 2008



President's Corner

Well, **Ike** has been here and gone. But his memory will live on for a long, long time as one of the most damaging storms to hit the upper Texas coast. It is clear that we'll be working through the aftermath of this storm for some time to come. On behalf of the board and membership I extend our collective best wishes and hopes that all of our members, family, and friends have made it through the storm safely and with minimal damage. Given the diverse geographical area our membership covers I can only image that at least a few members are going through some tough times at this point and our thoughts and prayers are with them and their families. Please refer to the article on the AAW Disaster Relief Fund and contact AAW if you are either impacted by the storm or would like to donate to the fund to help others.

While there is damage and destruction throughout our membership area and many of us need to be focused on recovery, there also lies in wait a good deal of free turning wood. Hopefully some of it can be harvested and shared with other members. It would be a shame to see all of those downed trees land up in land fills or mounds of mulch base.

Our September general meeting is still on for Saturday, 20 September. We have been in contact with the Woodcraft store and they are operational and waiting for us to arrive on Saturday!

The September meeting will be held at Woodcraft North on FM 1960 at I-45. We will have a presentation by Jim Keller and Bill Berry on Sanding. There will also be another critique session during the social time and all the normal meeting activities. Well, except for a Tool Swap – not this month.

This is our first meeting at the new Woodcraft North location and will be a learning experience for us. I have been told that seating space will be limited. So if you need to be seated during the meeting; please bring a chair as there will be no chairs avail-

GCWA Web Sites:

[Http://www.gulfcoastwoodturners.org](http://www.gulfcoastwoodturners.org)

[Http://jhanley.us](http://jhanley.us)

able. Since the space may be smaller than some other venues it may not be possible to have everyone seated for the main meeting. But just in case bring a chair along.

As with any time we meet at a retail location we should remember to respect the need for retail parking for the store's customer base not part of our meeting. So please leave open the spots directly in front of the store. There is ample parking.

Don't forget the September meeting will include a Stopper Exchange! And, yes, I do plan to have an entry - or two (I hope).

Next up on the agenda is the October meeting which will be held on Saturday, 11 October. If you noted that is not the normal 3rd Saturday for our meeting you are absolutely correct. The meeting date has been changed for October to avoid conflicts with SWAT and to free up the 3rd weekend for a large contingent of GCWA members going to SWAT.

On October 11 we will meet at the Architecture Model Shop at the University of Houston. This is also known as the Keeland Design and Exploration Center. Since this will be the same day as the **Jimmy Clewes** Demo Day (afternoon) we will be altering the normal meeting format somewhat to allow time for the afternoon session. We will start the meeting at 9:00 am as usual. However, there will not be a social time, instead will we get the

(Continued on page 3)

September Meeting
September 20, 2008

Woodcraft North

145 @ FM 1960

CLASSIFIED ADS

Woodturning related items of interest to GCWA Members listed as a free service.

FOR SALE \$75.00

Craftsman 10" Bench Drill Press
John King
22 Wedgewood Dr W
Montgomery, TX 77356-8368
936-449-5307 (home)
936-443-1994 (cell)
jjkingjr@consolidated.net

For Sale – Jet 1642

110v, 1.5 HP, Electronic Variable Speed. Excellent condition and includes the standard factory accessories. \$1,500. Contact George at (281) 460-0571 – cell or e-mail gkabacinski@gmail.com with any questions or to setup a time to pick up the lathe!

FOR SALE wood / lathe hauler

AKA a Factory built Utility Trailer. Description: Manufactured in 2006, 2000# capacity, 4' x 7' Ramp Gate w/ 2"x 2" angle iron sides. Single axle with 4.80 x12" tires, includes a new spare tire. \$275 (pictures emailed on request) Contact Linda Bohl 409-381-9597 or email: llbohl@att.net

FREE -- heavy duty plastic pallet.

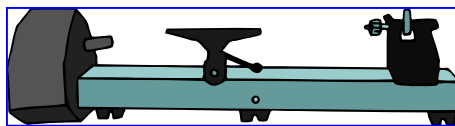
Was used to ship lawn-mower engines on. Will not rot. Good to keep your wood off the ground or floor. Contact Douglas Grissom at 281-859-9134 to make arrangements to pick up in the Hwy 6/Clay Road area of west Houston.

Cutting Edge now has Sunday hours from noon to 4pm

Neighbors Helping Neighbors

It is amazing the stories I've heard around the office this week of neighborhoods getting together for community dinners and reaching out to help each other following the storm. I know that in some localized areas GCWA members have joined forces to help out fellow members as well as others in the community. This is not a surprise considering the great people we have in the club.

Several members have been asking who within the club needs help and how can they get involved. If you need assistance or you know of fellow members who need assistance please contact George Kabacinski at (281) 460-0571 (cell) or post to the GCWA Forum so that all those who do have access can get the word. In fact, just let us all know how you're doing with a quick note on the forum or drop George a note at gkabacinski@gmail.com. If you e-mail please include a mention of whether it is ok to share the information on the member only forum and be sure to include contact information if you need assistance or would be available to help out other members.



Sanding for Woodturners

By Jim Keller

GCWA Meeting Demo 9/20/08

Sanding: 40 grit is OK, but 400 grit is better. The program for the September Meeting will be a demo by Bill Berry and Jim Keller discussing and demonstrating sanding techniques, materials and equipment.

Bill and Jim will share what they have learned about sanding over their combined thirty years of experience making turned wood objects.

This program won't make you a better wood turner, but will give you information to improve the quality of your finished project.

Sand sand sand Sand
sand sand sand sand Sand
sand **sand** sand Sand **sand**
sand sand **sand** Sand
sand sand sand ...

No Tool Swap!!

We will not be holding a Tool Swap during the September meeting. This is typical of when we meet at any retail location. You can look forward to more tool swaps at future meetings.

MEMBERSHIP

No new members joined GCWA in August.

Guess we need to beat the bushes a little harder this month.

(Continued from page 1)

meeting going with a demo presented by Jimmy Clewes. This will provide an introduction to what he will be doing in the afternoon session. Following Jimmy's demo will we have a Show and Tell (no judging this month) and conclude with a social time (depending on available time) and lunch (on your own).

Following lunch, those who have signed up for the Demo Day with Jimmy Clewes are invited back for his full 4 hour session beginning at high Noon. There is a \$35 fee for the afternoon session. You can register at the door or by contacting **Doug Grissom** at doug-las.grissom@att.net or 281-844-4397(C) to pre-register (preferred). Jimmy's demo during the morning meeting will, of course, be free. More details will follow. The hands-on classes are filled - unless someone fails to pay by the September meeting or drops out of a class. Contact Doug Grissom if you want to be on the wait list.

Our normal 3rd Saturday will be consumed with SWAT. This year GCWA will be hosting a room featuring a highly regarded and internationally know turner. SWAT will be providing a video operator to handle the camera, but we need to provide a room assistant for each session. This is a great opportunity to get the best seat in the room with a great turner. To sign up contact Tom Enloe at the September meeting or at SWAT. For more information on all the turners, sessions, and activities at SWAT check out the web site at www.swaturners.org.

I truly hope everyone is safe following the storm and I look forward to seeing all those who are able to make it to the September meeting.

george

President's Challenge

Here's a recap of the upcoming President's Challenges

September – A Bottle Stopper Exchange Challenge. This time around let's do a Bottle Stopper Exchange. This is an item that can be turned by most anyone with a lathe and a couple tools. Heck, I've even made a couple! Well, ok, my wife uses one of them just to be nice and it beats covering the top of the bottle with duct tape. Back to the Challenge – the bottle stopper can be simple or elaborate, made of wood or whatever, but it must be mainly turned on a lathe and be suitable for closing a typical wine bottle. As with the past Exchange Challenges whoever enters a challenge item will be part of the exchange – the same basic rules we've used before. Please sign your turning or include a tag indicating who the turner is and, if known, the type of wood or other media was used for the stopper.

October – We'll have some fun with a Halloween theme. To put some limits on what turns up let's define some rules. The maximum height of the object can not exceed 8" and the maximum width can not exceed 4". The choice of what to create is left to the creative artist in each of you. It just needs to represent the theme of Halloween in some manner.

November - A Collaborative Challenge. Beginning Level turners should pare up with an Intermediate or Advanced level turner and so on. For the project let's go for recovery of something that was previously discarded as a turning. So start to go through the waste bin and look for something that might be recoverable with the

help of another set of eyes, hands, tools, and ideas. Try to get out and turn with someone you've never turned with before. This should be fun, a creative learning experience, and an opportunity to work with someone new. Optionally, plan to bring a photo of the 'before' item so folks can get a sense of the transformation and recovery you've been able to pull off. Now, I realize there will be a few turners out there who do not have a scrap bin of 'almost made it' projects. So for Luna, Jim, John and the others we'll have to come up with a recovery project for them to work on. If you need one just let me know!

December – The traditional Ornament Exchange. I'm not about to mess with that tradition. We will not have a separate President's Challenge in December.

The next Exchange Challenge will be in March, 2009. While that's a ways off I wanted to put the challenge out and give everyone plenty of time to work on it. The item? A working time piece – this can be a wall clock, pocket watch, watch pendant, desk clock or whatever turns you on!

Congratulations to **David Morley** on winning the Craft Supplies Gift Certificate simply for bringing an item to the September President's Challenge! We will continue to award gift certificates each month (excluding months when we have an exchange) based on a random drawing of participant names.

Studio Open House Invitation

By John Van Domalen

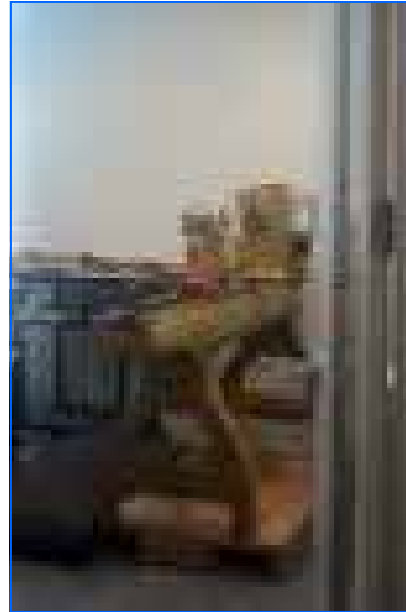
I would like to invite the GCWA membership to drop by HCCC and check out my new studio.

Time: 2-5 PM Saturday September 27th

Place : HCCC , studio 6, located at 4848 Main Street, Houston TX 77002

What: Open House – Adult beverages and snacks served
Thanks to glowing letters of recommendation from Tom Enloe and George Kabacinski , (the checks are in the mail guys), I was awarded a studio space for nine months , starting in Sept this year, running through next May.

Have met some interesting characters already, and am learning new things and have had the opportunity to explain and show what wood turning is to HCCC visitors. Thus far, it's been a great experience. Here are three pictures from the move in, it's slightly better organized now.



Jimmy Clewes Classes



By Douglas Grissom

Well, there is bad news and good news about the Jimmy Clewes' hands-on classes and club demo.

The bad news is that unless someone drops out or does not pay by the September 20th meeting, the hands-on classes are full.

The good news is that Jimmy will be doing a short demo for the October 11th meeting (free to all meet-



ing attendees) and will be doing

another demo starting at 12:00 Noon after the meeting for a fee of \$35.00.

There are plenty of openings for this demo. Make sure that you bring a chair as this meeting and the demo are at the woodworking shop of U of H which has no chairs. Some of Jimmy's turnings can be seen on his website, www.jimmyclewes.com.

If you have any questions about Jimmy's visit here, contact Douglas Grissom at douglas.grissom@att.net or

281-844-4397(C).

AAW Membership Benefits

*By Tom Wirsing
AAW Board Member*

Summer is drawing to a close. The weather will turn cooler, and our focus will turn from outside activities to inside. Many of us will be spending much more time at our lathes over the coming months and attendance at AAW Chapter meetings will increase with the change of seasons.

All AAW members know what they like best about their membership but some chapter members may not yet be AAW members and may wonder what benefits await them when they do join the AAW. If someone does not join AAW, the result may be they do not get as involved, may not learn as fast as they could, may not get "hooked" on woodturning, and may not become contributing members of your AAW chapter. What a lost opportunity that would be.

There are eight primary benefits of membership in the AAW. Following is a brief description of each benefit:

- 300 AAW Chapters in North America and around the world which are a great place to meet other woodturners, to share ideas, and to learn. They have monthly meetings with demonstrations and many other activities
- AAW Journal: American Woodturner is The Journal of the American Association of Woodturners with high quality, full-color

publication with a wealth of information for woodturners with articles on all aspects of woodturning and is published quarterly

- AAW Resource Guide: Lists all AAW members with contact information and lists all local chapters, with addresses and meeting times as well as information on Chapter Best Practices, the AAW Member Web Site, Star Chapters, 20th Anniversary Chapters, AAW bylaws, AAW Board of Directors, educational materials such as books and videos, lathe safety guidelines, and a host of other things and is published annually.
- AAW Symposium: World's largest gathering of woodturners with approximately 60 world-class demonstrators, a trade show with every major manufacturer of lathes, tools, and turning supplies and accessories in the world, an instant gallery with hundreds of the world's best wood turnings, a Youth Training Program, with lathe/equipment give-aways to participants, a banquet and auction of selected woodturnings from the Instant Gallery and much, much more. The 2009 Symposium in Albuquerque June 26-29, 2009
- AAW Website www.woodturner.org which is a great source of current information about the AAW and contains contact information for every AAW member world-wide, contact information for demonstrators, a guide to all local chapters, meeting times, locations, and contacts. It has current events, a gallery of current work, membership information, and much,

much more.

- AAW Forum: www.aawforum.org which is an interactive web site for AAW members where you can interact with woodturners from around the world. It is a great source of current information where you can post your questions, comments, information about your woodturnings, photos, etc. and seek information about woodturning resources, Machinery, tools and supplies and Wood
- Publications
- Educational Opportunity Grants: Almost \$100,000 in grants given away this year for individuals, clubs, schools. They are for any qualifying educational opportunity. See the AAW web site for details
- AAW Liability Insurance: Liability insurance for Chapter sanctioned events. See the AAW web site for details

Anyone who wishes to join the AAW may become a member simply by visiting the AAW web site at <http://www.woodturner.org/org/mbrship/> and signing up.

To see a presentation on the Value of Membership in the AAW, You can view either of two versions. One is in Microsoft PowerPoint format at http://www.woodturner.org/info/news/letters/AAW_Value_Proposition.ppt#276,1,Slide . The other is in PDF Adobe Reader format at http://www.woodturner.org/info/news/letters/AAW_Value_Proposition.pdf . Thanks and good turning!

AAW Disaster Emergency Relief Fund

By John Hill

AAW Chapters and Membership committee

Editor's Note: This message is slightly dated with the reference to Gustav and having just experienced Ike here in Houston. Otherwise it is a very timely message.

Immediately after the Hurricane Katrina disaster, the AAW Board of Directors created the [AAW Disaster Emergency Relief Fund](#). The fund was created through generous donations made by many world famous artists from the online sales of their donated art pieces and by cash donations made by many chapters and individual members. This fund helped 8 AAW members with their losses by distributing \$54,800 and retained 20% for future disasters. As Katrina was our first major tragedy, we had to invent the wheel as to how to get the money, identify AAW members affected by uninsured catastrophic losses, and how to verify those losses.

With the rapid approach of Hurricane Gustav (and now Ike) into the Gulf of Mexico with tragic loss expected from Florida to Texas, all AAW members should have this information. If any AAW member suffers catastrophic uninsured losses during this event, future events, or recent past events like fires in the West, floods in the Mid-west or floods in the East, they should contact the AAW office at mary@woodturner.org or call 651-484-9094. It will be the responsibility of the AAW chapter officers to confirm losses. If anyone knows of another AAW member affected, possibly dislocated, please let us know that as well along with any possible contact information. Chapter presidents in areas affected should stay in contact with the AAW Chapters committee. Tax deductible donations may be made to the AAW Disaster Emergency Relief Fund. All chapters and members are encouraged to donate and help out fellow woodturners during their time of loss.

Email Address Updates

By Mack DeBose

If your email address or phone number has changed please let the database administrator know. We have several members who are not getting email from the Club, including the Newsletter, because their address no longer works. You also need to make sure that your spam blocker is not blocking our emails.

The GCWA Officers and Board Members are particular as to the type and relevance of the emails that are sent out. The emails never contain any solicitations, politics, jokes, religious or sexual content. I am sure you want to be informed of events and late breaking news concerning GCWA, your membership and woodturning in general. And, I know you don't want to miss getting the monthly Newsletter.

So make sure we have your current email address, phone number and physical address. Send your update information to Mack DeBose at GCWA@swbell.net.

Water Conservation

Water is a valuable resource – especially when it is processed for human consumption and placed into costly plastic bottles. It was noted that at the end of GCWA numerous partially full water bottles are collected and thrown in the trash. This is both wasteful and costly for the club. It is certainly easy to misplace a bottle during all the activity of our meetings. Please make an effort to keep track of your water bottles and finish one before returning to the coolers for a refill. The same applies to soda. Consider bringing a unique Koozy or beverage wrap along with you to our meetings to help keep track of you drink. This will help the environment and help to keep a lid on our rising beverage costs.

Some members have asked about recycling bottles and cans from our meetings. This would be a positive for our environment for sure. If you are interested in taking on a role as recycling coordinator please contact one of the board members to discuss the topic.

HCCC Event Cancelled


The Gathering of the Guilds event scheduled for Saturday, 20 September at HCCC has been cancelled due to hurricane Ike. In fact, the entire Houston Museum District Day event has been cancelled due to the storm. For those who were planning to help out with the GCWA demo you now have some time freed up to attend the GCWA general meeting, take care of things around the house, or whatever you need to be doing.

AUGUST SHOW & TELL

Best of Show
Kendall Westbrook
 Elm & Minerals Box



Kendall Westbrook holding his Best of Show Elm & Minerals Box




Advanced Category

1st Place- Chris Roth,
 Cherry & Cocobolo Lamp




2nd Place- Bob Tabor
 Monkey Pod Hollow Form



3rd Place- Jim Keller
 Mesquite Dish



Hon Mention- Steve LeGrue
 Mesquite Bowl



Intermediate Category

1st Place- Scott Njaa,
 Cherry Vase



2nd Place- Stacey Grange,
 Kingwood Pen



3rd Place- Stacey Grange,
 Balsa Bowl




Hon Mention- Scott Njaa,
 Cherry Hollow Form




Beginner Category

1st Place- Derek Powers
 Cherry Bowl




2nd Place- Linda Bohl
 Antler Pens



3rd Place- Derek Powers,
 Sycamore Bowl



Hon Mention- Derek Powers,
 Mulberry Goblet



Enhanced Category

1st Place- Fog Tanner, Ash w/ Dye & Lime Free Forms



2nd Place- Janice Levi
 Fir, dyed w/ eggshell inlay Platter



3rd Place- Kendall Westbrook, Elm, dyed Vase



Hon Mention- Bob Brown, Maple w/ Inlay Platter



Segmented Category

1st Place- Bob Brown
 Baltic Birch Plywood Platter




2nd Place- Eddie James
 Jatoba & Maple Box



3rd Place- Jerry Collins, Mahogany & Beech Hollow Form



Hon Mention- Eddie James, Maple & Purple Heart Hollow Form



Snapshots from the August Meeting

President's Challenge

1st Place- Gene Bradley
Sweetgum & Mesquite Ladle



2nd Place- Mack DeBose, Iron-wood & Rosewood Tankard



3rd Place- David Morley
Cocobolo Straw



Hon Mention- Stacey Grange,
Goblet of unknown wood



Demonstration—Clyde Collier—Turning Femis Spheres



George Kabacinski got the meeting rolling with a plea for someone to pitch in and handle the soft drink and water coolers at upcoming meetings.



Gwynne Rukenbrod, Houston Center for Contemporary Craft's Curator of Fine Craft, shared her ideas about Artist's Critiques



Scott Njaa (that's N-J-A-A) discussed his first-place Intermediate Category winner with Bill Berry



Chris Roth told the crowd that he turned the lamp shade of his first-place Advanced Category lamp on the end grain.



Gwynne Rukenbrod shared her thoughts about several pieces from a curator's perspective. Here she discusses Kendall Westbrook's dyed elm vase.



Fog Tanner had a lot of fun describing his collection of free form pieces that earned him first place in the Enhanced Category.



Here Gwynne critiqued Janice Levi's elegant egg shell infused platter.

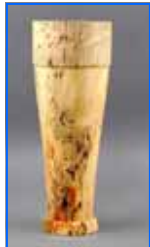


HCCC and GCWA have had a strong relationship of sharing ever since HCCC opened its doors.



Clyde Collier (left) and Bill Tilson (right) were the judges for August's Show & Tell entries.

Other Entries



Scheduled Meetings & Events

Meeting dates and locations are subject to change.

September 20, 2008 ~ GCWA General Meeting ~ 9AM - Noon ~ Woodcraft North ~ I-45 & FM 1960W
Demo by Bill Berry and Jim Keller, Sanding Techniques. President's Challenge: Bottle Stopper Exchange.

September 29, 2008 ~ Board Meeting ~ Tom Enloe's house

October 8-11, 2008 ~ Jimmy Clewes ~ Classes & Demo Day ~ Location TBD

October 11, 2008 ~ GCWA General Meeting ~ University of Houston School of Architecture with a special demo by Jimmy Clewes. President's Challenge: Something to do with Halloween (size limit: 8"H X 4"H)

October 17-19, 2008 ~ SWAT ~ Waco, TX

November 3, 2008 ~ Board Meeting ~ Steve LeGrue's The Cutting Edge, or his house (TBD)

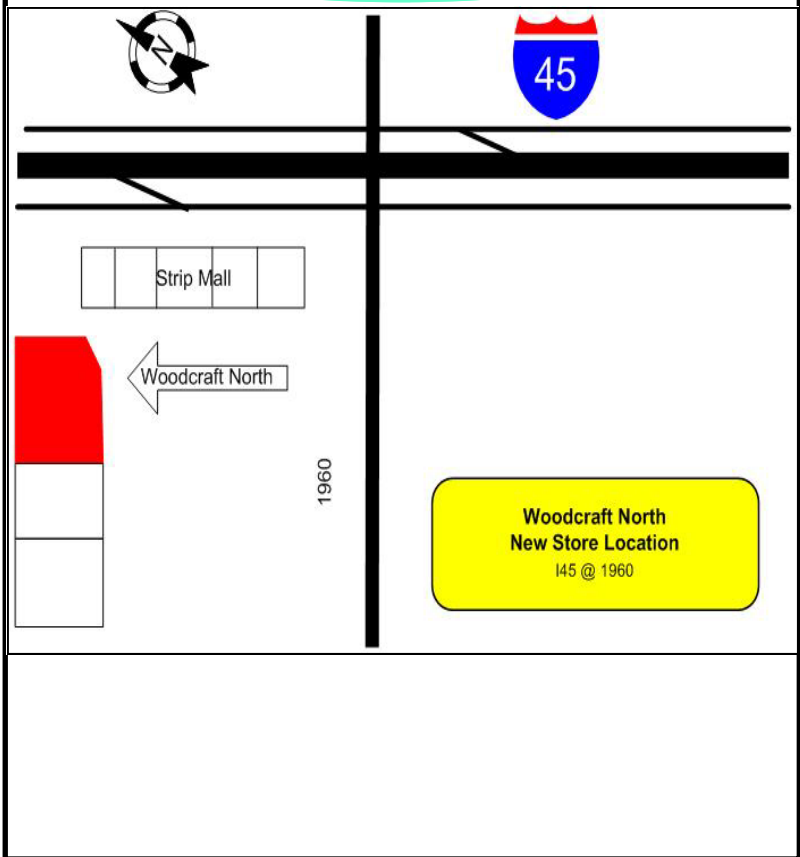
November 15, 2008 ~ GCWA General Meeting - The Cutting Edge
President's Challenge: Collaborative Challenge

December 1, 2008 ~ Board Meeting ~ George Kabacinski's house

December 20, 2008 ~ GCWA General Meeting ~ Clark's Hardwood Lumber
President's Challenge: Ornament Exchange

September Meeting

Woodcraft North
145 @ FM 1960



September Meeting Program

Demo by Bill Berry and Jim Keller
Sanding Techniques

EXECUTIVE COMMITTEE

George Kabacinski - President
(832) 349-3006
gkabacinski@gmail.com

Tom Enloe - Past President/Program
Chair/Librarian/SWAT Representative
(832) 229-4404
tomtom@houston.rr.com

Lane Bradford - Vice President
(281) 494-0396
LaneBradford@eaton.com
(281) 444-7993

Mack DeBose - Treasurer
(281) 444-7993
Lmdebose@swbell.net

Dave Barziza - Board Member/Judging
(713) 661-5941

Clyde Collier - Board Member
(281) 487-2143
clutha2143@sbcglobal.net

Steve Legrue - Board Member
(832) 496-0040 cell
(713) 981-9228 work

John Van Domelen - Secretary/
Website Technical Director
john@texasturner.com

Dale Barrack -
Website Creative Director
(281) 358-8529

Jim Keller—Board Member
David Morley—Newsletter Editor
(979) 255-8183
david.w.morley@gmail.com

Email: gcwa@swbell.net
GCWA Websites:
www.gulfcoastwoodturners.org
<http://jhanley.us>

Program Chairman
John Van Domelen

Copyright 2008 GCWA

GCWA is affiliated with the American Association of Woodturners. GCWA meetings are usually held at 9:00 AM on the 3rd Saturday of each month. Check the Calendar of Events page. Annual dues are \$18 due on January 1. Dues may be mailed to Mack DeBose, 11535 Clover Lane Ct, Houston, TX, 77066-3816. Make your check payable to GCWA or Gulf Coast Woodturners Assn.

Internet Web Sites of Interest

American Association of Woodturners: <http://www.woodturner.org>
Robert Sorby: <http://www.robert-sorby.co.uk/turning.htm>
Wood Magazine: <http://www.woodmagazine.com>
Rockler: <http://www.rockler.com>
The Cutting Edge: <http://www.cuttingedgetools.com>
Craft Supply: <http://www.woodturnerscatalog.com>
Tidewater Turners of Virginia: <http://www.esva.net/~woodturner>
Fred Holder's More Woodturning: <http://www.fholder.com>
Exotic Burl: <http://www.exoticburl.com>
San Diego WoodTurning Center, Inc.: <http://www.sdwoodturning.com>
Kestrel Creek Gallery: <http://www.kestrelcreek.com>
Hibdon Hardwoods: <http://www.hibdonhardwood.com>
Dallas Area Woodturners: <http://www.turningwood.com>
Woodcraft: <http://www.woodcraft.com>
Christian Burchard: <http://www.burchardstudio.com>
Southwest Association of Turners: <http://www.texasturnortwo.com>
Trent Bosch: <http://www.trentbosch.com>
Central Texas Woodturners: <http://www.ctwa.org>
Arizona Silhouette: <http://www.arizonasilhouette.com>
The Wood Turning Center: <http://www.woodturningcenter.org>
Woodturning Online: <http://www.woodturningonline.com>



Gulf Coast Woodturners
Association