



GULF COAST WOODTURNER

February, 2011



PRESIDENT'S CORNER

If I wanted to put up with all this cold weather I would live in Dallas. I don't know about you, but my shop is not heated or cooled so these extreme temperatures have driven me out for the time being. I hope that you have been able to work, even if I have not.

Our demonstrator this month will be **Paul Coppinger** from Mineola, Texas and the East Texas Woodturners (see page 3). Paul has been active in Texas woodturning circles for many years, and he is coming down to visit with us and share his secrets for an eye-popping finish. If this is an area that you have been struggling with, this is the demonstration for you.

Speaking of the upcoming meeting, **we will begin the business portion of the meeting at 9:00 am**, because we have a lot to discuss regarding the proposed **By-laws**. I will post the proposed by-laws on the website in an open area, so that you can look at them even if you don't have a user name and password. These by-laws have undergone numerous rewrites in an attempt to get input from all who are interested. I think that we have a very robust set of by-laws for your approval. Thanks to all of you who have provided your insight into this document. After considering comments at the meeting, we will vote on adoption of the by-laws at the March meeting. So plan to attend.

It is time to renew your memberships in **AAW** and **GCWA**. If you have not renewed your \$25/year membership to GCWA, please do so. **Ed Peine** will be taking your checks (preferred) and cash at the meeting. So plan to renew then, or just mail your check to our Treasurer **Jim Keller**, or to me. The benefits of membership are many, including access to our outstanding DVD library, judging in the Instant Gallery, inclusion in the Gold Gallery on the website, the chance to participate in classes with world-class turners and participation in the world's largest hands-on workshop: our Retreat. Oh, and donuts, did I mention donuts? While you are renewing your GCWA membership, please also consider joining or renewing your membership to the American Association of Woodturners (**AAW**). The national organization fosters growth in the regional chapters and hosts the National Symposium. They also provide us with the liability insurance that allows us to demonstrate to the public without fear of litigation. Officers, Board members, and anyone who wants to teach in any capacity for the club must be an AAW member.

GCWA Web Sites:
[Http://www.gulfcoastwoodturners.org](http://www.gulfcoastwoodturners.org)

The **SWAT** Board of Directors meeting was held in Waco last month. I attended as the GCWA representative, and I can tell you that SWAT has another strong program planned for 2011. The convention center renovations will be complete by August, and the Instant Gallery is moving into a larger space to adequately display our work. They still need local demonstrators. So if you are interested please contact George Hancock (ghancock@suddenlinkmail.com) for an application. In addition to honing your demonstration skills and sharing your passion, regional demonstrators are remunerated for their demonstrations and receive a pass for the symposium.

At the last meeting several of our members submitted their best work for inclusion in the AAW 25th Anniversary Chapter Exhibition, held in concert with this year's annual symposium in St. Paul. The judges had a very hard time selecting a single piece that best represented the talent in our club, but they were eventually drawn to the stunning segmented vase made by **Kendall Westbrook**. Many thanks to our judges, **Mary Rogers, Roger Deatherage and Donna Milstein**. They had a very hard job, but we can all be proud that Kendall's piece will represent GCWA in the AAW traveling exhibition. Thanks also to our members who supported this activity by allowing their work to be evaluated. If you submitted work and have not yet collected your pieces, we will return them at this month's meeting.



Continued on page 2

**February Meeting
February 19, 2011**

Memorial Lutheran Church
5800 Westheimer Road, Houston, TX 77057

Continued from page 1

We are again collecting work for the **2011 Empty Bowls** affair, to be held March 19th (see below). The bowls are auctioned, with the proceeds going to the Houston Food Bank. We have supported this activity for a number of years, and I hope that you will be able to donate again this year. The bowls don't have to be your best work, nor signed. There will be a collection box for your donations at the next meeting. We will also be turning at Houston Center for Contemporary Craft (HCCC) during that Saturday, which coincides with our regular meeting on March 19. If you are interested in participating in turning at HCCC during this event, please contact **Dave Barziza** or **Larry Zarra**.

We are frequently asked by companies for our e-mail list in exchange for their contributing goods and gift certificates to our raffles. The policy of the club has been to refuse these requests, but the increasingly web-driven nature of life has compelled the board to reconsider this issue. A few months ago I asked members at a meeting if they would object to providing their e-mail to reputable companies, and if they would like to opt-out of this distribution list. I had only one person say that they wanted to opt-out. Unfortunately, verbal instructions are not good enough. So we need it in writing if you want to opt-out. We would never sell this list, nor provide it to companies that did not have a written policy that they will not release our information to any other third parties. We will release our list to a select group of vendors in the next 60 days unless you provide our Secretary, **Ed Peine**, with a written request to opt-out. If we don't hear from you, your e-address will be provided. On the same topic, please spend your hard-earned woodturning dollars at the businesses that support our club.

We will be treated to another nationally and internationally known turner when **John Jordan** visits us April 9-12 (see page 6). **Note that our meeting date that month has been moved up to the 9th**. John is recognized for his



heavily carved and textured hollow forms, which evoke an earthy familiarity. John is an authority on wood structure and use, which is evident in his dramatic use of sapwood. At this writing, John's club demo in the morning will be on wood structure as it relates to bowl form, turning an open form. As always, the morning session is free to all. In the afternoon, John will give a longer demo on hollow forms, with some carving and texturing on the vessel. The Saturday afternoon class is \$25. On the remaining three days he will offer hands-on workshops on hollowing and surface decoration. Sunday will see a hollowing workshop, and I'm sure John will be anxious to sell his tools and videos. Monday will be devoted to carving and texturing, etc. You can use the piece you turned Sunday, or bring in some pieces to work on in class. Tuesday will be a free-form class for those wishing special attention on specific techniques. Each hands-on workshop is \$135. We will be collecting your checks (preferably) for these classes at the meeting. Look for **Ed Peine**, who will also be collecting your dues. If your dues are not current, you can not sign up for a class. Your place can only be held with full payment, first come, first served. Don't miss this.



The Nominating Committee of George **Kabacinski**, **Bill Berry** and **Bill Lewis** has done a great job getting a strong list of candidates for the up-coming election of Officers and Board members. If you have a desire to serve, speak to one of the committee members to be included on the ballot. We will also be taking nominations from the floor at the February and March meetings. Ballots will be sent out with the April newsletter, and voting will begin at the April general meeting. More on this later.

Steve LeGrue

Empty Bowls Event at HCCC

By David Barziza

The **Empty Bowl Event** takes place on March 19, 2011 at Houston Center for Contemporary Craft located at 4848 Main St., Houston. The February GCWA meeting will be your last chance to bring bowls to our regular monthly meeting. If you have bowls to donate after the February meeting you can take them to HCCC at the above address or call Dave Barziza (281-236-6747) to make other arrangements. Look around your shop and or your house for any size bowls you can part with. The other option is turn your lathe on and turn a few 3" – 5" diameter bowls. So far we have ten (10) bowls from the

January meeting and I would like forty (40) more to make an even 50. Last year we donated thirty-five (35) and this year GCWA would like to have at least 50. The money raised goes to the Houston Food Bank. The January newsletter had an excellent article by Andy Chen with more details about this event.

In addition GCWA will be demonstrating at this event. At this time **Greg Gonsalves**, **Don Fluker**, and **Larry Zarra** have committed to represent GCWA. Anyone else that would like to come and demonstrate or just watch is welcome.

CLASSIFIED ADS

Woodturning related items of interest to GCWA Members listed as a free service.

Woodturning Lessons: Hands-on woodturning lessons are now being given by **Jim Keller** at Foxfire Studios. You pick the subject; learn with my tools or yours. One-way 2430 and Jet 1642 lathes available. Rates- 4 hour lesson 4 hour lesson for GCWA Members \$70.00, non members \$80.00, add a second person for: member \$45.00, non-members \$50.00. Call 281-467-2866 for information or to schedule a lesson.

INSTRUCTION: Current woodturning instructor for the Houston Center for Contemporary Craft, **Thomas Irven**, will teach beginning to advanced participants turning in his Bellaire Studio. Classes will be individualized to your needs and tools will be available. Learn box making multi-axis, spindle, and bowl turning and finishing. Limited to 1 - 4 students. Call or e-mail Tom for pricing and information. 713-666-6881.
trirven@sbcglobal.net.

PEN BLANKS FOR SALE...\$1.25 per blank plus shipping. Over 150 species available. Contact Doug Van Buskirk at dvb@comcast.net for a list of species.

February Demo - The Art of Finishing

By Tom Enloe

This month the demo will be presented by Paul Coppinger from the East Texas Woodturners' Association. He approaches finishing as a MAJOR element of a turning project and has developed specific skills and a knowledge base that he is willing to share with us. We plan to have an informal afternoon Q & A at a nearby restaurant (TBD), plan to join us and bring your questions and problem pieces for discussion.



Below is a short bio and summary of Paul's finishing presentation, looks like it will be an interesting presentation by someone who knows his subject.

Bio of Paul Coppinger

Paul was born in Houston, Texas in 1946. He grew up on the east side of Houston in the Pecan Park/Gulfgate area. During a 9th grade woodworking class, he turned his first piece, which he still has. In the summer of his junior year of high school, he moved to Cypress, Texas and graduated from Cy-Fair High School. He attended the University of Houston on the Co-op program working for Wyatt Industries and Houston Lighting and Power. He graduated with both a BSEE & MSEE and then joined Texas Instruments (TI) in Dallas, Texas.

Paul has demo-ed for turning clubs in Ft. Worth, Denton and his own club in Tyler. For several years he has hosted world-class turners teaching one-day classes in his shop for club members. In 2010, he started a monthly open shop day in Mineola for anyone interested in turning. He enjoys turning bowls, platters, vessels, Christmas ornaments, earrings, etc., and teaching woodturning in his shop.

Abstract of The Art of Finishing

The art of finishing is much more than just watching paint dry. It takes lots of hard work, both in time and effort. The art of obtaining a world class piece to be proud of and that will be the envy of most of the other turners consists of 4 parts: surface preparation, appropriate finish product, technique and finishing the finish. This presentation will discuss what is a finish, different categories of finishes for woodturning, how the differences between stains and dyes can help or hinder turnings and how to accomplish the 4 steps above. Finally, many examples of the various application techniques and finishes will be presented and discussed.

Club News and Announcements

The Galveston Historical Foundation (GHF) recently purchased *Eye of The Storm*, a large wood-turned sculpture made from reclaimed Hurricane Ike wood by former resident artist, **John Van Domelen**. The piece will reside on the ground floor of the Customs House, the historical building that houses the GHF headquarters, as part of the *Lost Galveston* permanent collection and exhibit. Bogan Gallery on the Island facilitated the sale.

John Van Domelen explains, "I was serving as an artist-in-residence at HCCC at the time of Hurricane Ike, and this was one of the first pieces I turned from the huge amount of timber that was available on Galveston Island and the surrounding area after the storm swept though Texas. By

way of locals calling the Center to donate wood, I managed to save some timber from the landfill. One resident called in with an offer of a huge Black Walnut tree, which is not common here in the Houston area. This is how I came by the Pecan for this piece. An entire body of work from this wood makes up my *Gifts from Ike* series. *Eye Of The Storm* was a cathartic endeavor, as I needed to do something to reground myself, to connect to the cycle of renewal, and to make something positive out of all the destruction left by the storm."



(Reprinted from HCCC February e-Newsletter with permission)

Member Spotlight:

Steve Willis, Dream Supplier to Woodworker's in the Gulf Coast.

By Jeff Kapche

The first time I met Steve Willis, I had to buy a tool for my expensive hobby called "woodturning" at his woodworking store. Steve is the manager of a local woodworking store that has been generous to GCWA with raffle donations and discounts. Steve is also a GCWA club member. I therefore patronize his store when I need more supplies for my hobby, or what my wife refers to as "feeding my addiction". I take offense to this because she has the same "addiction" when she gets near the mall or a local Wal-Mart.



In January, I celebrated my birthday, and my only request was to spend some money at the local woodworking store. Family in tow, kids were excited because they were going to get something too. My wife had the "I miss Wal-Mart" look on her face. The birthday shopping spree came to an end after collecting as much as the kids and I could carry and it was time to check out. Steve was at the register, and the counter was loaded with my birthday bounty. I think this made Steve happy also. I then found that Steve was an avid pen turner, like me. Steve had one of his masterpieces with him and proudly showed it off. Then from her zombie-like trance, my wife had a flash of brilliance and suggested I interview Steve for the club. This was perfect because I had missed the last meeting and was not able to recruit anyone. Steve tried to stay humble and convince me that he was not worth recruiting. I reminded him that the whole purpose of the interview was to have GCWA members learn about each other. Thanks to Steve, he agreed to suffer the slings and arrows of the written word for another newsletter.

Steve Willis was born and raised in the small town of Colorado, where he lived most of the first half of his life before moving to Houston. Steve got his start with woodworking about 16 years ago, when he subscribed to the Time-Life book series on Home Improvement. Steve stated, "One of the volumes covered woodworking, including basic joinery. I went into my garage and began trying to make some of the joints. They were very basic joints, like lap joints and such. Anyway, I got hooked."

Steve continued his journey when he got an old waterbed from his nephew that was getting thrown out. Steve took the wood from the frame, stripped it, and built a bookshelf that is still in use today. Steve proudly told me how the bookshelf has stood the test of time by surviving a flood during Hurricane Allison and a fire. It is obvious that he has mastered other areas after looking at some of his

other projects (see photos).

Steve began woodturning about 5 years ago, and is satisfied with his pen turning ability (see photos). When it comes to turning, Steve also has his favorite tools. Steve says, "Well I really enjoy using my bowl and spindle gouges; but, I have not yet quite gotten the hang of the skew."

Steve has also built a number of furniture items for his home and enjoys selling his pens and band saw boxes. One of Steve's most prized pens that I had the privilege of seeing first hand was his box elder/birch pen he recently made. Steve explained how he completed his creation, "The process was really pretty simple. I started off with a square blank of box elder that was dyed blue. I chamfered it at 45 degrees on all four corners to make it into an octagon. I then drilled 1/8" holes for the birch dowel rods. After inserting the rods, I covered the blank in thin CA. This prevents the rods from backing out of the holes when you drill it for the brass tube insertion. I used a BLO/CA finish on the pen." After surveying the craftsmanship, I found the pen to be an inspiration for me and my pen turning.

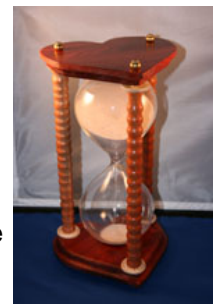


Steve finds his inspiration for his projects by playing the "I wonder what that would look like" game. He does this by thinking of crazy ideas, and then trying to bring them out in his woodworking. Steve



also takes inspiration from a local woodworker named Jeremy Grubb. Steve explains, "I think Jeremy is one of the best woodworkers I have ever met. His passion is very infectious."

Steve and his wife volunteer their time as the official photographers for the Sprint for Life run, which helps with the fight against ovarian cancer. Steve also donates some of his woodworking. Steve recalls when he donated a band saw box he made out of mahogany and ebony to a make-a-wish auction for a girl who was dying from can-



Continued on page 6

Spring Retreat 2011

By Douglas Grissom

It is ONLY 90 days until our Spring Retreat 2011 kicks off from our next meeting. Classes are being set, potential instructors are having their arms twisted, the two raffles (more on that later) are being stocked with many goodies, and the registration form is taking shape to be included with the April newsletter.

Now it is your turn to pitch in. Let Reggie Keith (reggie.keith@hoover-keith.com) know which of your lathes you will be bringing to the retreat. We will be needing about 75 lathes, most of which need to be minis/midis. We will also need some large format lathes. Reggie will also know what other pieces of equipment, drill press, sharpening systems, etc, that we will need.

There will be two separate raffles. One is the general raffle that I know already includes an autographed DVD from Jimmy Clewes, gift certificates from several of the vendors, and a mesquite burl turning block (or 2). The other raffle is a special one from some of the demo items that have been given to the club by various national and international renowned turners. Details of this raffle will be given out at the retreat. You will have an opportunity to get a turned piece that in some places would sell for many, many dol-

lars for only the price of a special raffle ticket.

I am still in need of some help in some areas, mainly at the retreat.

1. One or two to help Ed Piene, Ben Gray and especially Mary Gray, Ben's wife with the registration on Friday afternoon/evening and Saturday morning.
2. One to help Gene and Ailene Bradley with Instant Gallery, Public Area, and raffle ticket sales throughout the retreat.
3. One to help Chris Roth and Ron Day with keeping drinks cold and coffee hot throughout the retreat.
4. One more blower, gas or electric, and someone to operate it for the final blowout of the building at the end of the retreat.

You can start cleaning out your garage/shop/studio because there will be a table or two for the sale and/or trade of woodworking items. Also, bring out your best one or two turnings to display in the Instant Gallery which will be open to the public.

If you have questions, contact me at douglas.grissom@att.net or 281-844-4397(C).

Thanks in advance for all of your help.

Move to the Head of the Class

By George Kabacinski

As this is written I'm eagerly awaiting Saturday's class with **Larry Zarra** on turning small hollow vessels. Of course, the class is full and the students are ready. But the good news is Larry has agreed to do a second session of this class. He's also tweaked the hand-out he provided for his January club demo for the class participants. I'll report more on this class in the next issue. And hopefully we'll be able to announce the actual date for the second session by then – no pressure, Larry. Ha! Most of the second session is spoken for, but there is a slot (or two?) open. So if you're interested in the class please send me a note. As soon as we have a date for the class an e-mail will go out to folks on the wait list for confirmation of their participation and submission of the class fee.

Next up is **Janice Levi** teaching her class on Turning a Fancy Box with Delicate Finial. Janice has done numerous club demos for GCWA and other clubs, has taught many a Retreat class, and has been a demonstrator at SWAT. She is a seasoned professional for turning instruction and everyone I know who has been in a class with Janice has had great things to say of the experience.



Janice says of the upcoming class –

"The goal of this class is to learn to turn elegant small boxes with delicate finials. The level of difficulty for this class is "Intermediate" and above. We will also look at form and proportion that can not only be applied to turning boxes but to other pieces, as well. If you do not have a small hollowing tool, please do not rush out and buy one - yet. We have several tools that you can borrow. However, after you have made one, you'll want to make more."

So this will be more than just turning as Janice will also be teaching proportion and good form. This one is not to be missed. The class will be Saturday, March 12th at U of H Keeland Center. Now, why do I think I'm going to need another wait list? Hmm.

Following Janice's class in March the club will have a great National turner demonstrate and conduct classes at Foxfire Studio in Richmond. This will be a special meeting date on the 2nd Saturday in April and will feature renowned wood artist, turner, and teacher **John Jordan**. Registration for his classes will be open at the February and March general meetings. For additional information on John's classes please contact **Jim Keller** or **Steve LeGrue**.

The month of May will bring the GCWA Annual Spring Retreat. This year the whole shebang is being headed up by **Doug Grissom**. **Tom Enloe** and **Paula Haymond** are working on the program for the Retreat so if you have any

Continued on page 6

Continued from page 4

cer. He remembers the person who bought the box immediately turned around and gave it to the girl as a gift, which made it all worthwhile for him (see photo of band saw box).



Steve's humorous side comes out when describing his other passion – martial arts. Steve explains, "I currently hold a 2nd degree black belt in Tae Kwon Do. During my instruction, I needed to purchase a Bo staff. I decided that I could make my own on my lathe. So I did. I made one out of purpleheart. The rest of my dojo was im-

pressed, but after a week of using it in class, I was asked to stop bringing it. The problem was that the purpleheart was so dense, that I was cracking the oak staves of the other students. I still use the staff to test with and for kata (a Japanese word describing detailed choreographed patterns of movements practiced in solo) work, just not during partner work."

Steve keeps his mind sharp by playing chess or other strategy games when he is not woodworking or practicing Tae Kwon Do. Steve says, "Like woodworking, games are simply another puzzle to solve." Now if I could only get him to solve the puzzle of convincing my wife on my dream purchase of a new CNC machine.

Continued from page 5

ideas on classes, demos or would like to lead a class or present a demo please contact Tom or Paula.

We're not currently scheduling any local classes for June. Everyone will be at the AAW 25th Anniversary Symposium, right? I know I'll be there.

While it is some time down the road, registration is open for **Fog Tanner's** one day hands-on class on skew techniques – The Magic Tool. Fog makes extensive use of the skew and has studied under a master of its use – **Richard Raffan**. Fog's class will be held on Saturday, July 23rd in Cypress (far NW Houston). The building is air conditioned so a July class will not be a problem. Fog's class is very much a techniques class but it will include a couple small projects to show off your newly developed skew skills. As with the other one-day local

hands-on classes the fee is \$35. Now, everyone must have at least one (dozen?) skew around the shop, right? Why not take advantage of this opportunity to learn how to use it for more than opening paint cans? With the vast number of unused and misunderstood skews in the world this class is sure to fill up quickly. So don't wait – sign up early.

Past requests for ideas on future classes have actually resulted in a few ideas floating in. That's great. Keep the cards, letters, and e-mails flowing in! Send your ideas to **George Kabacinski** and we'll see what we can arrange for future local classes. Note: If you want your idea to get to the top of the list be sure to send it in on the back of a \$50 bill – That's US currency, not cell phone bills or other such nonsense!

Watch this space in the next newsletter for more on local classes for later this year.

John Jordan, April 9-12

By Steve LeGrue

Nationally known and influential woodturning artist John Jordan will be coming to demonstrate and teach hands-on workshops in early April. John is known for his distinctive hollow forms with beautifully carved and textured surfaces.

The monthly meeting has been moved up one week to April 9th at Foxfire in Richmond. On Saturday morning, John will give a demonstration on wood structure and how it affects the design of the bowl, as well as turning an open form. This demonstration is free and open to all. In the afternoon, John will continue by turning a hollow form and doing some carving and texturing on it. As in the past, the afternoon demonstration is \$35.



John will offer hands-on workshops the following three days.

Sunday 4/10: Hollow turning. Use John's tools or your own to master the hollow form.

Monday 4/11: Carving and Texturing. You can use the piece you made in class the day before, or bring in your bowls and hollow forms to have John teach you his techniques.

Tuesday 4/12: A more open class where you can work with John on any aspect of your turning, but specifically hollow forms and texturing. You can use this day to take a class offered earlier in the week that you had to miss.

The one day workshops are \$135, and payment will hold your spot in these workshops and demonstrations. A sign-up sheet will be at the meeting, and **Ed Peine** will be collecting your checks (preferably) for these classes. Remember that your dues must be current before you can sign up for any of these classes. Don't miss this great opportunity.

JANUARY SHOW & TELL

Best of Show
Gary Rock
Ornament collection



Judges: Derek Powers and Edward Bartimmo
Photos: Paul Millo



Advanced Category

1st Place – Chris Roth
Mesquite bowl



2nd Place – Marty Kaminski



Box
elder
bowl

3rd Place – Dennis April



Spalted
sycamore
hollow from

Intermediate Category

1st Place – Darrell Corcorran



Mesquite
bowl

2nd Place – Darrell Corcorran



Spalted silver
maple vase

3rd Place – George Kabacinski



Pen collec-
tion

Beginner Category

1st Place – Aaron Gilbert



Persimmon/
osage orange
goblet

2nd Place – Cliff Ober



Found wood
bowl

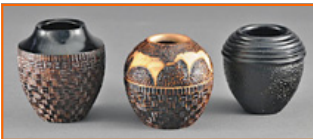
3rd Place – Dan Fleetwood



Bracelet of
various
woods

Enhanced Category

1st Place – Gene Volentine
Maple hollow form collection



2nd Place – Janice Levi



Sycamore purse

3rd Place – Kendall Westbrook



Hackberry orna-
ment

Segmented Category

1st Place – Andy Chen



Corian
box

2nd Place – John Gay

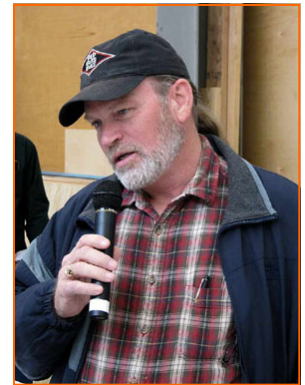


Multi-wood box

Judges



Snapshots from the January Meeting



Pictures can be viewed at
www.gulfcoastwoodturners.org
 Photos: Ric Taylor, Dale Barrack,

MENTOR PROGRAM

The following members have volunteered to serve as Club Mentors:
Jim Keller ----- (281) 467-2866

Larry Zarra ----- (281) 528-9183
By Reed ----- (979) 830-0917
Bill Berry ----- (281) 479-8073
Marty Kaminsky -- (281) 339-3297
Luna Ford ----- (281) 476-4159

Brian Laing ----- (281) 580-5381
 If you would like to have one of these individuals talk with you about a particular piece, feel free to bring it to the meeting.

Scheduled Meetings & Events

Meeting dates and locations are subject to change.

February 19, 2011 ~ GCWA General Meeting ~ 9:00 AM - noon

Location: Memorial Lutheran Church

March 7, 2011 ~ Board Meeting

March 19, 2011 ~ GCWA General Meeting ~ 9:00 AM - noon

Location: Memorial Drive Presbyterian Church

March 28, 2011 ~ Board Meeting

April 9, 2011 ~ GCWA General Meeting ~ 9:00 AM - noon

Location: Foxfire Studios, demonstrator, John Jordan

May 21, 22, 2011 ~ Spring Retreat

Location: Montgomery County Fairgrounds

June 18, 2011 ~ GCWA General Meeting ~ 9:00 AM - noon

Location: Bayland Community Center, Houston, TX

July 16, 2011 ~ GCWA General Meeting ~ 9:00 AM - noon

Location: Memorial Drive Presbyterian Church

August 20, 2011 ~ GCWA General Meeting ~ 9:00 AM - noon

Location: Bayland Community Center, Houston, TX

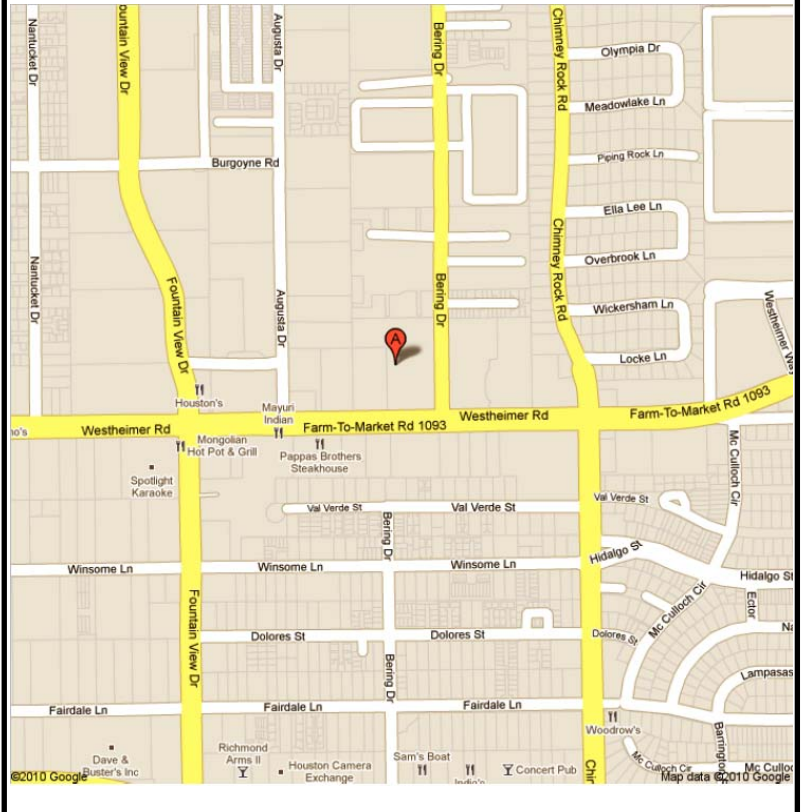
August 26 - 28, 2011 ~ SWAT annual symposium

Location: Waco Convention Center

February Meeting

Memorial Lutheran Church

5800 Westheimer Road, Houston, TX 77057



February Meeting Program

Finishing by Paul Coppinger

EXECUTIVE COMMITTEE

Steve LeGrue - President
(832) 496-0040 cell
slegrue@comcast.net

**Dave Barziza - Vice President/
Judging**
(713) 661-5941
davebarziza@yahoo.com

Ed Peine - Secretary
(713) 977-9922
epeine@comcast.net

Jim Keller - Treasurer
(281) 467-2866
jimkeller.foxfire@comcast.net

Lane Bradford - Board Member
(936) 447-9310
LaneBradford@eaton.com

Derek Powers - Board Member
(832) 444-2470
derekpowers@gmail.com

Thomas Irvén - Board Member
(713) 666-6881
trirven@sbcglobal.net

Ben Gray - Board Member
(281) 859-3132
BenG@rigidbuilding.com

Chris Roth - Board Member
(713) 444-5619
rothcf@earthlink.net

Dale Barrack-Website Creative Director
(281) 358-8529

John Van Domelen - Website Technical Director
john@texasturner.com

Andy Chen - Newsletter Editor
(979) 693-1211
andy_c_chen@yahoo.com

Email: gcwa@swbell.net
GCWA Websites:
www.gulfcoastwoodturners.org

Program Chair
Tom Enloe

Copyright 2010 GCWA

GCWA is affiliated with the American Association of Woodturners. GCWA meetings are usually held at 9:00 AM on the 3rd Saturday of each month. Check the Calendar of Events page. Annual dues are \$25 due on January 1. Dues may be mailed to Jim Keller, 105 S. 2nd Street, Richmond, TX 77406. Make your check payable to GCWA or Gulf Coast Woodturners Assn.

Internet Web Sites of Interest

American Association of Woodturners: <http://www.woodturner.org>
Robert Sorby: <http://www.robert-sorby.co.uk/turning.htm>
Wood Magazine: <http://www.woodmagazine.com>
Rockler: <http://www.rockler.com>
Craft Supply: <http://www.woodturnerscatalog.com>
Tidewater Turners of Virginia: <http://www.esva.net/~woodturner>
Fred Holder's More Woodturning: <http://www.fholder.com>
Exotic Burl: <http://www.exoticburl.com>
San Diego WoodTurning Center, Inc.: <http://www.sdwoodturning.com>
Kestrel Creek Gallery: <http://www.kestrelcreek.com>
Hibdon Hardwoods: <http://www.hibdonhardwood.com>
Dallas Area Woodturners: <http://www.turningwood.com>
Woodcraft: <http://www.woodcraft.com>
Christian Burchard: <http://www.burchardstudio.com>
Southwest Association of Turners: <http://www.swaturners.org>
Trent Bosch: <http://www.trentbosch.com>
Central Texas Woodturners: <http://www.ctwa.org>
Arizona Silhouette: <http://www.arizonasilhouette.com>
The Wood Turning Center: <http://www.woodturningcenter.org>
Woodturning Online: <http://www.woodturningonline.com>



**Gulf Coast Woodturners
Association**