

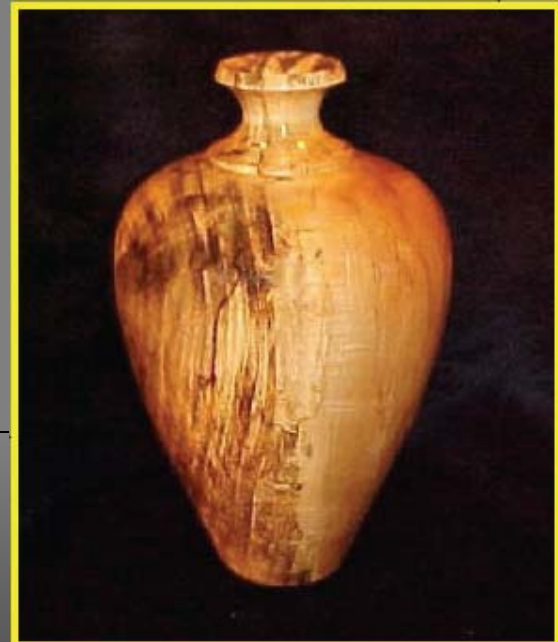
Show & Tell Judging

- Judging Categories
- Judging Guidelines
- Awards
- Balancing Technical and Judgmental Elements
- Selecting Judges
- Show & Tell Participation



Judging Categories

- Beginner
- Intermediate
- Advanced
- Enhanced/Segmented
- Kits
- President's Challenge



Judging Categories

- BEGINNER
 - New turners generally start at Beginner level
 - The standards aren't high
 - If it's made of wood and approximately round, it qualifies
 - New members don't have to start at this level if it's inappropriate to their abilities
 - Primary goal is to get comfortable with woodturning



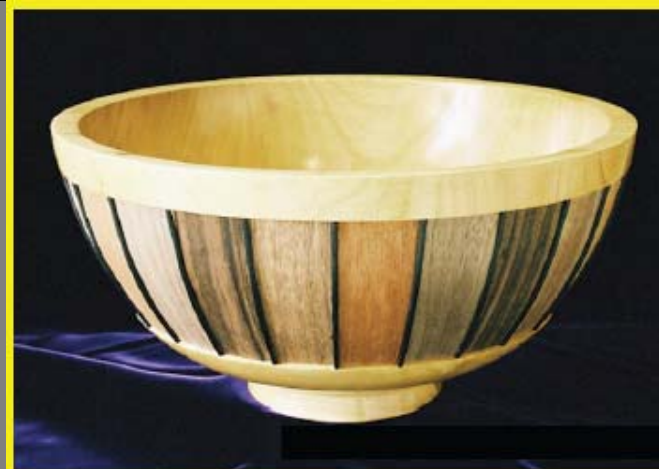
Judging Categories

- INTERMEDIATE
 - The next level up
 - How do you get there?
 - Advancement requires winning three ribbons--any combination of firsts, seconds, or thirds
 - Advancement is strictly on the honor system
 - You keep track of your awards--you decide when you advance
 - Once advanced, you should not compete at a lower level



Judging Categories

- **ADVANCED**
 - The next level up
 - How do you get there?
 - Advancement requires winning three ribbons--any combination of firsts, seconds, or thirds
 - Advancement is strictly on the honor system
 - You keep track of your awards--you decide when you advance
 - Once advanced, you should not compete at a lower level



Judging Categories

- ENHANCED/SEGMENTED
 - Not a higher level -- a *separate* level
 - Category created to provide greater opportunities for turners to feature their creativity and be recognized for it
 - Enter multiple-piece, segmented, carved, burned colored, gilded, etc. pieces in this category
 - Who can compete? Turners of all levels --
Beginner, Intermediate and Advanced
 - If a piece is partially enhanced or segmented, it may be submitted in the Enhanced/Segmented category, or you can choose to enter it in your appropriate division: Beginner, Intermediate, or Advanced



Judging Categories

- KITS
 - Category created to recognize the on-going interest by many of our members in kit turning
 - Who can compete? Turners of all levels -- Beginner, Intermediate and Advanced



Judging Categories

- PRESIDENT'S CHALLENGE
 - Held at the discretion of the club's president
 - Intended to promote woodturning skills and creativity
 - Each challenge typically announced 1 or more months in advance
 - Who can compete? Turners of all levels --
Beginner, Intermediate and Advanced



Judging Guidelines

The following is a guide for judging turned projects. Except for the Best of Show Award, projects do not have to meet all the criteria to be selected for an award. However, these are the areas that should be developed as a woodturner's skills increase.

- DESIGN
- WORKMANSHIP
- FINISH



Judging Guidelines

- DESIGN
 - Does the project have good form; is it pleasing to the eye?
 - Does it have clean lines?
 - Does it have good proportion?
 - Does the wood (or material) selection compliment the design?



Judging Guidelines

- WORKMANSHIP
 - Is the project free of tool marks and sanding scratches?
 - Is it free of crushed fibers?
 - Is it smooth to the touch and free of undulations?
 - If a bowl or a vessel, is the wall thickness consistent?
 - If a closed form, is the inside smooth?
 - Is the bottom finished?



Judging Guidelines

- FINISH
 - Has finish been applied?
 - Is the finish smooth?
 - Has it been buffed?



Judging Awards

- Best of Show
- First Place
- Second Place
- Third Place
- Honorable Mention



Judging Awards

- **BEST OF SHOW**
 - The highest award the club can bestow
 - Judges have the discretion to award, or not to award, Best of Show at each Show & Tell competition
 - The piece should be of exceptional quality both technically and aesthetically
 - Who can compete?
 - Turners of all levels --
 - Beginner, Intermediate and Advanced



Judging Awards

- FIRST PLACE
- SECOND PLACE
- THIRD PLACE



Using the Judging Guidelines, the distinction between First, Second and Third place awards is in the eyes of the judges.

Judgmental decisions obviously play a role in this process

Judging Awards

- HONORABLE MENTION

Judges can award Honorable Mention Awards in each category to pieces that aren't selected for First, Second or Third place awards, but are otherwise well executed.



Balancing Technical & Judgmental Elements

“Ooh, I like it!” is not sufficient reason to select a piece for an award

On the other hand, “Ooh, I like it” typically indicates a compelling reason to investigate further.

Judges should honor both technical and judgmental elements and exclude neither consideration when deciding which pieces get awards and which don't.



Selecting Judges

Who should judge others' work?

It requires a thorough understanding of both technical and judgmental elements.

It's best left to those members who not only understand, but can also execute, both elements in their own pieces

In other words, it's best to have
Advanced or Intermediate turners do the judging

Beginning turners are always welcome to participate in the judging process as observers



Show & Tell Participation

- This topic is not about placing projects on the Show & Tell Tables -- it's about participation in Show & Tell judging.
- "I can't . . . I have a headache"
- "I can't . . . I'm too busy eating my donut!"
- "I can't . . . I'm afraid of offending someone"
- Not good reasons not to judge Show & Tell
- when asked to do so.
- Please participate--you'll get an extra donut
- and a big kiss from Shawn!

